

Anti-Chromogranin A precursor antibody (Internal) (STJ70936)

STJ70936

GENERAL INFORMATION

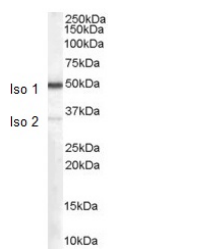
Product Type	Primary antibodies
Short Description	Goat polyclonal antibody anti-Chromogranin A precursor (Internal) is suitable for use in ELISA, Western Blot and Immunohistochemistry research applications.
Applications	Pep-ELISA, WB, IHC
Host/Source	Goat
Reactivity	Human

PRODUCT PROPERTIES

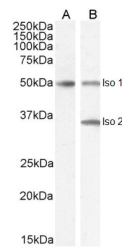
Clonality	Polyclonal
Clone ID	
Concentration	0.5 mg/mL
Conjugation	Unconjugated
Purification	Purified from goat serum by ammonium sulphate precipitation followed by antigen affinity chromatography using the immunizing peptide.
Dilution Range	IHC-3.75µg/ml FC-Flow cytometric analysis of A549 cells. 10ug/ml ELISA-antibody detection limit dilution 1:4000.
Formulation	0.5 mg/ml in Tris saline, 0.02% sodium azide, pH7.3 with 0.5% bovine serum albumin.
Isotype	IgG
Storage Instruction	Store at -20 on receipt and minimise freeze-thaw cycles.

TARGET INFORMATION

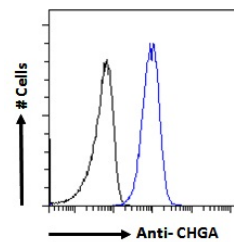
Gene ID	1113
Gene Symbol	CHGA
Uniprot ID	CMGA_HUMAN
Immunogen	Internal
Region	
Specificity	
Immunogen Sequence	QGAKEAHHQKKKH



STJ70936 (0.1 µg/ml) staining of isoform 1+2 Human Kidney lysate (35 µg protein in RIPA buffer). Detected by chemiluminescence.



STJ70936 (2 µg/ml) staining of isoform 1 Human Brain (A) and isoform 1+2 (B) lysate (35 µg protein in RIPA buffer). Detected by chemiluminescence.



STJ70936 Flow cytometric analysis of paraformaldehyde fixed A549 cells (blue line) permeabilized with 0.5% Triton. Primary incubation 1hr (10 µg/ml) followed by Alexa Fluor 488 secondary antibody (1 µg/ml). IgG control: Unimmunized goat IgG (black line) followed by Alexa Fluor 488 secondary antibody.

This product is suitable for in-vitro studies under the RESEARCH USE ONLY [RUO] licence. This product must not be used as for diagnostic or other medical purposes.

St John's Laboratory Ltd, Knowledge Dock Business Centre, University Way, London, E16 2RD | Tel: 0208 223 3081