

Anti-Leptin Receptor antibody (Internal) (STJ70931)

STJ70931

GENERAL INFORMATION

Product Type	Primary antibodies
Short Description	Goat polyclonal antibody anti-Leptin Receptor (Internal) is suitable for use in ELISA and Western Blot research applications.
Applications	Pep-ELISA, WB
Host/Source	Goat
Reactivity	Human, Dog

PRODUCT PROPERTIES

Clonality	Polyclonal
Clone ID	
Concentration	0.5 mg/mL
Conjugation	Unconjugated
Purification	Purified from goat serum by ammonium sulphate precipitation followed by antigen affinity chromatography using the immunizing peptide.
Dilution Range	IHC-4µg/ml FC-Flow cytometric analysis of K562 cells. 10ug/ml ELISA-antibody detection limit dilution 1:16000.
Formulation	0.5 mg/ml in Tris saline, 0.02% sodium azide, pH7.3 with 0.5% bovine serum albumin.
Isotype	IgG
Storage Instruction	Store at-20 on receipt and minimise freeze-thaw cycles.

TARGET INFORMATION

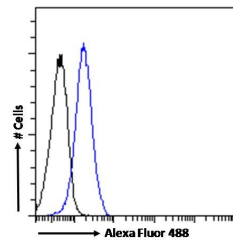
Gene ID	3953
Gene Symbol	LEPR
Uniprot ID	LEPR_HUMAN
Immunogen	
Immunogen Region	Internal
Specificity	This antibody is expected to recognise all three reported isoforms (NP_002294.2; NP_001003679.1; NP_001003680.1).
Immunogen Sequence	TQDDIEKHQSDAG



STJ70931 (0.1µg/ml) staining of Mouse (A) and Rat (B) Brain lysate (35µg protein in RIPA buffer). Detected by chemiluminescence.



STJ70931 (1µg/ml) staining of Human Cerebral Cortex lysate (35µg protein in RIPA buffer). Detected by chemiluminescence.



STJ70931 Flow cytometric analysis of paraformaldehyde fixed K562 cells (blue line), permeabilized with 0.5% Triton. Primary incubation 1hr (10µg/ml) followed by Alexa Fluor 488 secondary antibody (1µg/ml). IgG control: Unimmunized goat IgG (black line) followed by Alexa Fluor 488 secondary antibody.

This product is suitable for in-vitro studies under the RESEARCH USE ONLY [RUO] licence. This product must not be used as for diagnostic or other medical purposes.

St John's Laboratory Ltd, Knowledge Dock Business Centre, University Way, London, E16 2RD | Tel: 0208 223 3081