

## Anti-STAM2 antibody (Internal) (STJ70906)

STJ70906

### GENERAL INFORMATION

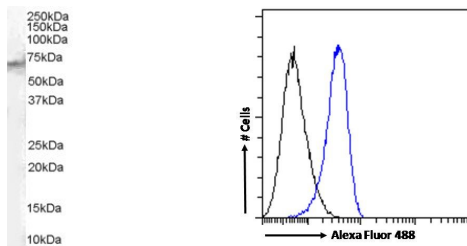
<b>Product Type</b>	Primary antibodies
<b>Short Description</b>	Goat polyclonal antibody anti-STAM2 (Internal) is suitable for use in ELISA and Flow Cytometry research applications.
<b>Applications</b>	Pep-ELISA, FC
<b>Host/Source</b>	Goat
<b>Reactivity</b>	Human, Mouse, Dog

### PRODUCT PROPERTIES

<b>Clonality</b>	Polyclonal
<b>Clone ID</b>	
<b>Concentration</b>	0.5 mg/mL
<b>Conjugation</b>	Unconjugated
<b>Purification</b>	Purified from goat serum by ammonium sulphate precipitation followed by antigen affinity chromatography using the immunizing peptide.
<b>Dilution Range</b>	WB-1-3µg/ml FC-Flow cytometric analysis of K562 cells. 10ug/ml ELISA-antibody detection limit dilution 1:8000.
<b>Formulation</b>	0.5 mg/ml in Tris saline, 0.02% sodium azide, pH7.3 with 0.5% bovine serum albumin.
<b>Isotype</b>	IgG
<b>Storage Instruction</b>	Store at -20 on receipt and minimise freeze-thaw cycles.

### TARGET INFORMATION

<b>Gene ID</b>	10254
<b>Gene Symbol</b>	STAM2
<b>Uniprot ID</b>	STAM2_HUMAN
<b>Immunogen</b>	
<b>Immunogen Region</b>	Internal
<b>Specificity</b>	No cross-reaction expected with STAM1.
<b>Immunogen Sequence</b>	QSIDPTDSKPDSQD



STJ70906 (1µg/ml) staining of Human Spleen lysate (35µg protein in RIPA buffer). Detected by chemiluminescence.

STJ70906 Flow cytometric analysis of paraformaldehyde fixed K562 cells (blue line), permeabilized with 0.5% Triton. Primary incubation 1hr (10ug/ml) followed by Alexa Fluor 488 secondary antibody (1ug/ml). IgG control: Unimmunized goat IgG (black line) followed by Alexa Fluor 488 secondary antibody.

This product is suitable for in-vitro studies under the RESEARCH USE ONLY [RUO] licence. This product must not be used as for diagnostic or other medical purposes.

St John's Laboratory Ltd, Knowledge Dock Business Centre, University Way, London, E16 2RD | Tel: 0208 223 3081