

Anti-SMAD9 antibody (Internal) (STJ70900)

STJ70900

GENERAL INFORMATION

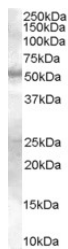
Product Type	Primary antibodies
Short Description	Goat polyclonal antibody anti-SMAD9 (Internal) is suitable for use in ELISA, Western Blot, EIA and Immunohistochemistry research applications.
Applications	Pep-ELISA, WB, EIA, IHC
Host/Source	Goat
Reactivity	Human, Mouse, Rat, Dog

PRODUCT PROPERTIES

Clonality	Polyclonal
Clone ID	
Concentration	0.5 mg/mL
Conjugation	Unconjugated
Purification	Purified from goat serum by ammonium sulphate precipitation followed by antigen affinity chromatography using the immunizing peptide.
Dilution Range	WB-0.3-1.0 µg/ml IHC-5µg/ml ELISA-antibody detection limit dilution 1:64000.
Formulation	0.5 mg/ml in Tris saline, 0.02% sodium azide, pH7.3 with 0.5% bovine serum albumin.
Isotype	IgG
Storage Instruction	Store at -20 on receipt and minimise freeze-thaw cycles.

TARGET INFORMATION

Gene ID	4093
Gene Symbol	SMAD9
Uniprot ID	SMAD9_HUMAN
Immunogen	
Immunogen Region	Internal
Specificity	This antibody is not expected to cross-react with SMAD1 and SMAD5.
Immunogen Sequence	HSEPLMPHNATYPD



STJ70900 (0.3µg/ml) staining of Human Skin lysate (35µg protein in RIPA buffer). Detected by chemiluminescence.