

Anti-CKB/Brain Creatine Kinase antibody (Internal) (STJ70892)

STJ70892

GENERAL INFORMATION

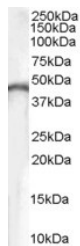
Product Type	Primary antibodies
Short Description	Goat polyclonal antibody anti-CKB/Brain Creatine Kinase (Internal) is suitable for use in ELISA and Immunofluorescence research applications.
Applications	Pep-ELISA, IF
Host/Source	Goat
Reactivity	Human, Mouse, Rat, Dog, Pig, Cow

PRODUCT PROPERTIES

Clonality	Polyclonal
Clone ID	
Concentration	0.5 mg/mL
Conjugation	Unconjugated
Purification	Purified from goat serum by ammonium sulphate precipitation followed by antigen affinity chromatography using the immunizing peptide.
Dilution Range	WB-0.1-0.3µg/ml ELISA-antibody detection limit dilution 1:2000.
Formulation	0.5 mg/ml in Tris saline, 0.02% sodium azide, pH7.3 with 0.5% bovine serum albumin.
Isotype	IgG
Storage Instruction	Store at -20 on receipt and minimise freeze-thaw cycles.

TARGET INFORMATION

Gene ID	1152
Gene Symbol	CKB
Uniprot ID	KCRB_HUMAN
Immunogen	
Immunogen Region	Internal
Specificity	
Immunogen Sequence	KPSDEHKTDLNPDN



STJ70892 (0.1 µg/ml) staining of human brain lysate (35 µg protein in RIPA buffer). Primary incubation was 1 hour. Detected by chemiluminescence.