

Anti-AIF1/IBA1-Isoform 3 antibody (Internal) (STJ70888)

STJ70888

GENERAL INFORMATION

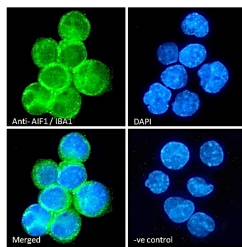
Product Type	Primary antibodies
Short Description	Goat polyclonal antibody anti-AIF1/IBA1-Isoform 3 (Internal) is suitable for use in ELISA, Western Blot and Immunohistochemistry research applications.
Applications	Pep-ELISA, WB, IHC
Host/Source	Goat
Reactivity	Human, Mouse, Dog

PRODUCT PROPERTIES

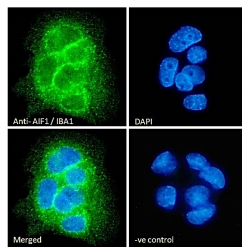
Clonality	Polyclonal
Clone ID	
Concentration	0.5 mg/mL
Conjugation	Unconjugated
Purification	Purified from goat serum by ammonium sulphate precipitation followed by antigen affinity chromatography using the immunizing peptide.
Dilution Range	WB-0.5-1.5µg/ml FC-Flow cytometric analysis of K562 cells. 10ug/ml ELISA-antibody detection limit dilution 1:32000.
Formulation	0.5 mg/ml in Tris saline, 0.02% sodium azide, pH7.3 with 0.5% bovine serum albumin.
Isotype	IgG
Storage Instruction	Store at -20 on receipt and minimise freeze-thaw cycles.

TARGET INFORMATION

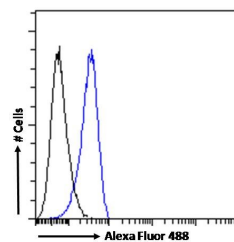
Gene ID	199
Gene Symbol	AIF1
Uniprot ID	AIF1_HUMAN
Immunogen	Internal
Region	
Specificity	This antibody is expected to recognise isoform 3 (NP_001614.3) only.
Immunogen Sequence	NKQFLDDPKYSSDED



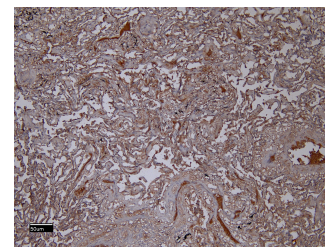
STJ70888 Immunofluorescence analysis of paraformaldehyde fixed U937 cells immobilized on Shi-fix coverslip, permeabilized with 0.15% Triton. Primary incubation 1hr (10ug/ml) followed by Alexa Fluor 488 secondary antibody (2ug/ml) showing cytoplasmic staining. The nuclear stain is DAPI (blue). Negative control: Unimmunized goat IgG (10ug/ml) followed by Alexa Fluor 488 secondary antibody (2ug/ml).



STJ70888 Immunofluorescence analysis of paraformaldehyde fixed CaCo-2 cells immobilized on Shi-fix™ coverslip, permeabilized with 0.15% Triton. Primary incubation 1hr (10ug/ml) followed by Alexa Fluor 488 secondary antibody (2ug/ml) showing cytoplasmic staining. The nuclear stain is DAPI (blue). Negative control: Unimmunized goat IgG (10ug/ml) followed by Alexa Fluor 488 secondary antibody (2ug/ml).



STJ70888 Flow cytometric analysis of paraformaldehyde fixed K562 cells (blue line) permeabilized with 0.5% Triton. Primary incubation 1hr (10ug/ml) followed by Alexa Fluor 488 secondary antibody (1ug/ml). IgG control: Unimmunized goat IgG (black line) followed by Alexa Fluor 488 secondary antibody.



STJ70888 (6µg/ml) staining of paraffin embedded Human Lung. Heat induced antigen retrieval with citrate buffer pH 6, HRP-staining.

This product is suitable for in-vitro studies under the RESEARCH USE ONLY [RUO] licence. This product must not be used as for diagnostic or other medical purposes.

St John's Laboratory Ltd, Knowledge Dock Business Centre, University Way, London, E16 2RD | Tel: 0208 223 3081