

Anti-TRAF2 antibody (C-Term) (STJ70887)

STJ70887

GENERAL INFORMATION

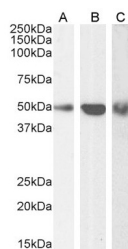
Product Type	Primary antibodies
Short Description	Goat polyclonal antibody anti-TRAF2 (C-Term) is suitable for use in ELISA, Western Blot, Immunofluorescence and Immunohistochemistry research applications.
Applications	Pep-ELISA, WB, IF, IHC
Host/Source	Goat
Reactivity	Human, Mouse, Rat, Dog, Cow

PRODUCT PROPERTIES

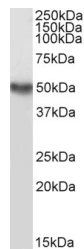
Clonality	Polyclonal
Clone ID	
Concentration	0.5 mg/mL
Conjugation	Unconjugated
Purification	Purified from goat serum by ammonium sulphate precipitation followed by antigen affinity chromatography using the immunizing peptide.
Dilution Range	IHC-3.75µg/ml IF-Strong expression of the protein seen in the endoplasmic reticulums of HeLa and A431 cells. 10µg/ml ELISA-antibody detection limit dilution 1:128000.
Formulation	0.5 mg/ml in Tris saline, 0.02% sodium azide, pH7.3 with 0.5% bovine serum albumin.
Isotype	IgG
Storage Instruction	Store at -20 on receipt and minimise freeze-thaw cycles.

TARGET INFORMATION

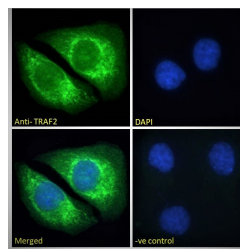
Gene ID	7186
Gene Symbol	TRAF2
Uniprot ID	TRAF2_HUMAN
Immunogen	C-Term
Region	
Specificity	
Immunogen Sequence	KMEAKNSYVRDD



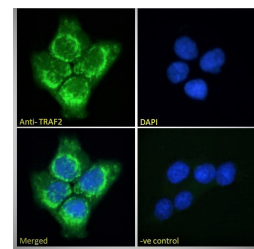
STJ70887 (0.1µg/ml) staining of HepG2 (A) cell lysate, (0.5µg/ml) Human Ovary (B) lysate and (0.1µg/ml) Jurkat (C) cell lysate. 35µg protein in RIPA buffer. Detected by chemiluminescence.



STJ70887 (0.3µg/ml) staining of Mouse Testes lysate (35µg protein in RIPA buffer). Detected by chemiluminescence.



STJ70887 Immunofluorescence analysis of paraformaldehyde fixed HeLa cells, permeabilized with 0.15% Triton. Primary incubation 1hr (10µg/ml) followed by Alexa Fluor 488 secondary antibody (2µg/ml) showing cytoplasmic and endoplasmic reticulum staining. The nuclear stain is DAPI (blue). Negative control: Unimmunized goat IgG (10µg/ml) followed by Alexa Fluor 488 secondary antibody (2µg/ml).



STJ70887 Immunofluorescence analysis of paraformaldehyde fixed A431 cells, permeabilized with 0.15% Triton. Primary incubation 1hr (10µg/ml) followed by Alexa Fluor 488 secondary antibody (2µg/ml) showing cytoplasmic and endoplasmic reticulum staining. The nuclear stain is DAPI (blue). Negative control: Unimmunized goat IgG (10µg/ml) followed by Alexa Fluor 488 secondary antibody (2µg/ml).

This product is suitable for in-vitro studies under the RESEARCH USE ONLY [RUO] licence. This product must not be used as for diagnostic or other medical purposes.

St John's Laboratory Ltd, Knowledge Dock Business Centre, University Way, London, E16 2RD | Tel: 0208 223 3081