

Anti-TIM3/HAVCR2 antibody (Internal) (STJ70863)

STJ70863

GENERAL INFORMATION

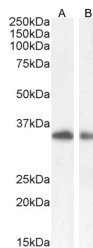
Product Type	Primary antibodies
Short Description	Goat polyclonal antibody anti-TIM3/HAVCR2 (Internal) is suitable for use in ELISA research applications.
Applications	Pep-ELISA
Host/Source	Goat
Reactivity	Human, Dog

PRODUCT PROPERTIES

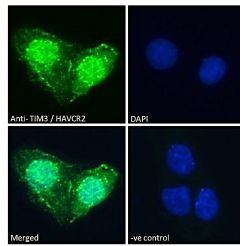
Clonality	Polyclonal
Clone ID	
Concentration	0.5 mg/mL
Conjugation	Unconjugated
Purification	Purified from goat serum by ammonium sulphate precipitation followed by antigen affinity chromatography using the immunizing peptide.
Dilution Range	WB-Recommended concentration:1-3µg/ml IF-Strong expression of the protein seen in the cytoplasm/membranes and nuclei of HepG2 cells. 10µg/ml ELISA-antibody detection limit dilution 1:32000.
Formulation	0.5 mg/ml in Tris saline, 0.02% sodium azide, pH7.3 with 0.5% bovine serum albumin.
Isotype	IgG
Storage Instruction	Store at-20 on receipt and minimise freeze-thaw cycles.

TARGET INFORMATION

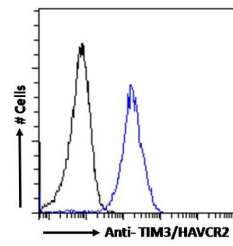
Gene ID	84868
Gene Symbol	HAVCR2
Uniprot ID	HAVR2_HUMAN
Immunogen	
Immunogen Region	Internal
Specificity	
Immunogen Sequence	KWYSHSKEKIQN



STJ70863 (0.1 µg/ml) staining of A549 (A) and (0.5 µg/ml) HepG2 (B) cell lysate (35µg protein in RIPA buffer). Detected by chemiluminescence.



STJ70863 Immunofluorescence analysis of paraformaldehyde fixed HepG2 cells, permeabilized with 0.15% Triton. Primary incubation 1hr (10µg/ml) followed by Alexa Fluor 488 secondary antibody (2µg/ml), showing nuclear and plasma membrane staining. The nuclear stain is DAPI (blue). Negative control: Unimmunized goat IgG (10µg/ml) followed by Alexa Fluor 488 secondary antibody (2µg/ml).



STJ70863 Flow cytometric analysis of paraformaldehyde fixed HepG2 cells (blue line), permeabilized with 0.5% Triton. Primary incubation 1hr (10µg/ml) followed by Alexa Fluor 488 secondary antibody (1µg/ml). IgG control: Unimmunized goat IgG (black line) followed by Alexa Fluor 488 secondary antibody.