

Anti-RPS19 antibody (Internal) (STJ70819)

STJ70819

GENERAL INFORMATION

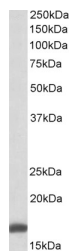
Product Type	Primary antibodies
Short Description	Goat polyclonal antibody anti-RPS19 (Internal) is suitable for use in ELISA, Western Blot, Immunofluorescence, Flow Cytometry and Immunohistochemistry research applications.
Applications	Pep-ELISA, WB, IF, FC, IHC
Host/Source	Goat
Reactivity	Human, Mouse, Rat, Dog, Cow

PRODUCT PROPERTIES

Clonality	Polyclonal
Clone ID	
Concentration	0.5 mg/mL
Conjugation	Unconjugated
Purification	Purified from goat serum by ammonium sulphate precipitation followed by antigen affinity chromatography using the immunizing peptide.
Dilution Range	WB-0.3-1µg/ml IHC-5µg/ml ELISA-antibody detection limit dilution 1:16000.
Formulation	0.5 mg/ml in Tris saline, 0.02% sodium azide, pH7.3 with 0.5% bovine serum albumin.
Isotype	IgG
Storage Instruction	Store at -20 on receipt and minimise freeze-thaw cycles.

TARGET INFORMATION

Gene ID	6223
Gene Symbol	RPS19
Uniprot ID	RS19_HUMAN
Immunogen	
Immunogen Region	Internal
Specificity	
Immunogen Sequence	KMVEKDQDGGRK



STJ70819 (0.3µg/ml) staining of lysate of cell line K562 (35µg protein in RIPA buffer). Detected by chemiluminescence.