

## Anti-Cannabinoid Receptor 1 antibody (Internal) (STJ70782)

STJ70782

### GENERAL INFORMATION

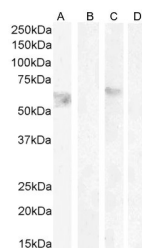
<b>Product Type</b>	Primary antibodies
<b>Short Description</b>	Goat polyclonal antibody anti-Cannabinoid Receptor 1 (Internal) is suitable for use in ELISA, Western Blot and Immunofluorescence research applications.
<b>Applications</b>	Pep-ELISA, WB, IF
<b>Host/Source</b>	Goat
<b>Reactivity</b>	Human, Mouse, Rat, Dog

### PRODUCT PROPERTIES

<b>Clonality</b>	Polyclonal
<b>Clone ID</b>	
<b>Concentration</b>	0.5 mg/mL
<b>Conjugation</b>	Unconjugated
<b>Purification</b>	Purified from goat serum by ammonium sulphate precipitation followed by antigen affinity chromatography using the immunizing peptide.
<b>Dilution Range</b>	ELISA-antibody detection limit dilution 1:32000.
<b>Formulation</b>	0.5 mg/ml in Tris saline, 0.02% sodium azide, pH7.3 with 0.5% bovine serum albumin.
<b>Isotype</b>	IgG
<b>Storage</b>	Store at -20 on receipt and minimise freeze-thaw cycles.
<b>Instruction</b>	

### TARGET INFORMATION

<b>Gene ID</b>	1268
<b>Gene Symbol</b>	CNR1
<b>Uniprot ID</b>	CNR1_HUMAN
<b>Immunogen</b>	Internal
<b>Region</b>	
<b>Specificity</b>	This antibody is expected to recognise both reported isoforms. Isoform a (NP_057167.2; NP_001153732.1; NP_001153731.1; NP_001153730.1; NP_001153698.1) and isoform b (NP_149421.1).
<b>Immunogen Sequence</b>	HTSEHGKVVQVTRPDQ



STJ70782 (1µg/ml) staining of HeLa lysate non-glycosylated (A) + peptide (B) and (0.5µg/ml) HeLa lysate glycosylated (C) + peptide (D) (35µg protein in RIPA buffer). Detected by chemiluminescence.

This product is suitable for in-vitro studies under the RESEARCH USE ONLY [RUO] licence. This product must not be used as for diagnostic or other medical purposes.  
 St John's Laboratory Ltd, Knowledge Dock Business Centre, University Way, London, E16 2RD | Tel: 0208 223 3081