

## Anti-Duffy/FY/DARC antibody (N-Term) (STJ70779)

STJ70779

### GENERAL INFORMATION

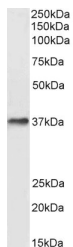
<b>Product Type</b>	Primary antibodies
<b>Short Description</b>	Goat polyclonal antibody anti-Duffy/FY/DARC (N-Term) is suitable for use in ELISA, Western Blot, Immunohistochemistry, Immunofluorescence and EM research applications.
<b>Applications</b>	Pep-ELISA, WB, IHC, IF, EM
<b>Host/Source</b>	Goat
<b>Reactivity</b>	Human

### PRODUCT PROPERTIES

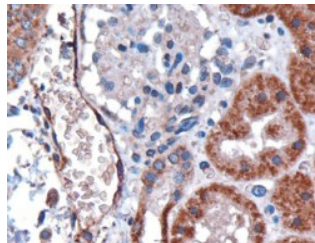
<b>Clonality</b>	Polyclonal
<b>Clone ID</b>	
<b>Concentration</b>	0.5 mg/mL
<b>Conjugation</b>	Unconjugated
<b>Purification</b>	Purified from goat serum by ammonium sulphate precipitation followed by antigen affinity chromatography using the immunizing peptide.
<b>Dilution Range</b>	WB-0.3-1 µg/ml IHC-3 µg/ml FC-Flow cytometry: Flow cytometric analysis of HEK293 cells. 10 µg/ml ELISA-antibody detection limit dilution 1:16000.
<b>Formulation</b>	0.5 mg/ml in Tris saline, 0.02% sodium azide, pH7.3 with 0.5% bovine serum albumin.
<b>Isotype</b>	IgG
<b>Storage</b>	Store at -20 on receipt and minimise freeze-thaw cycles.
<b>Instruction</b>	

### TARGET INFORMATION

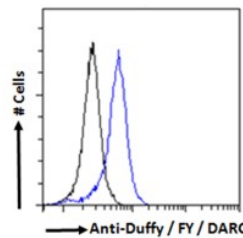
<b>Gene ID</b>	2532
<b>Gene Symbol</b>	ACKR1
<b>Uniprot ID</b>	ACKR1_HUMAN
<b>Immunogen</b>	
<b>Immunogen Region</b>	N-Term
<b>Specificity</b>	This antibody is expected to recognize both reported isoforms (NP_001116423.1; NP_002027.2).
<b>Immunogen Sequence</b>	HRAELSPSTENSSQLDFED



STJ70779 (0.3 µg/ml) staining of Human Liver lysate (35 µg protein in RIPA buffer). Detected by chemiluminescence.



STJ70779 (3 µg/ml) staining of paraffin embedded Human Kidney. Microwaved antigen retrieval with citrate buffer Ph 6, HRP-staining.



Flow cytometric analysis of paraformaldehyde fixed HEK293 cells (blue line), permeabilized with 0.5% Triton. Primary incubation thr (10 µg/ml) followed by Alexa Fluor 488 secondary antibody (0.4 µg/ml). IgG control: Unimmunized goat IgG (black line) followed by Alexa Fluor 488 secondary antibody.

This product is suitable for in-vitro studies under the RESEARCH USE ONLY [RUO] licence. This product must not be used as for diagnostic or other medical purposes.

St John's Laboratory Ltd, Knowledge Dock Business Centre, University Way, London, E16 2RD | Tel: 0208 223 3081