

Anti-RAE1 antibody (C-Term) (STJ70738)

STJ70738

GENERAL INFORMATION

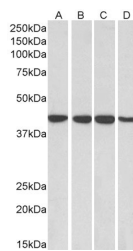
Product Type	Primary antibodies
Short Description	Goat polyclonal antibody anti-RAE1 (C-Term) is suitable for use in ELISA, Western Blot and Immunohistochemistry research applications.
Applications	Pep-ELISA, WB, IHC
Host/Source	Goat
Reactivity	Human, Mouse, Rat, Pig, Dog, Cow

PRODUCT PROPERTIES

Clonality	Polyclonal
Clone ID	
Concentration	0.5 mg/mL
Conjugation	Unconjugated
Purification	Purified from goat serum by ammonium sulphate precipitation followed by antigen affinity chromatography using the immunizing peptide.
Dilution Range	WB-0.1-0.3µg/ml IHC-3-6µg/ml, 3.75µg/ml ELISA-antibody detection limit dilution 1:64000.
Formulation	0.5 mg/ml in Tris saline, 0.02% sodium azide, pH7.3 with 0.5% bovine serum albumin.
Isotype	IgG
Storage Instruction	Store at -20 on receipt and minimise freeze-thaw cycles.

TARGET INFORMATION

Gene ID	8480
Gene Symbol	RAE1
Uniprot ID	RAE1L_HUMAN
Immunogen	
Immunogen Region	C-Term
Specificity	NP_003601 and NP_001015885 represent identical proteins.
Immunogen Sequence	NAAEELKPRNKK



STJ70738 (0.1 µg/ml) staining of HepG2 (A), HeLa (B), Jurkat (C) and MCF7 (D) lysates (35 µg protein in RIPA buffer). Primary incubation was 1 hour. Detected by chemiluminescence.

This product is suitable for in-vitro studies under the RESEARCH USE ONLY [RUO] licence. This product must not be used as for diagnostic or other medical purposes.
St John's Laboratory Ltd, Knowledge Dock Business Centre, University Way, London, E16 2RD | Tel: 0208 223 3081