

Anti-VPS11 antibody (Internal) (STJ70733)

STJ70733

GENERAL INFORMATION

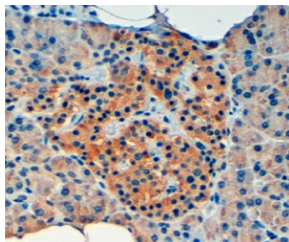
Product Type	Primary antibodies
Short Description	Goat polyclonal antibody anti-VPS11 (Internal) is suitable for use in ELISA, Flow Cytometry, Immunofluorescence and Immunohistochemistry research applications.
Applications	Pep-ELISA, FC, IF, IHC
Host/Source	Goat
Reactivity	Human, Mouse, Rat, Dog, Cow

PRODUCT PROPERTIES

Clonality	Polyclonal
Clone ID	
Concentration	0.5 mg/mL
Conjugation	Unconjugated
Purification	Purified from goat serum by ammonium sulphate precipitation followed by antigen affinity chromatography using the immunizing peptide.
Dilution Range	IHC-Recommended concentration, 3-6µg/ml ELISA-antibody detection limit dilution 1:32000.
Formulation	0.5 mg/ml in Tris saline, 0.02% sodium azide, pH7.3 with 0.5% bovine serum albumin.
Isotype	IgG
Storage Instruction	Store at -20 on receipt and minimise freeze-thaw cycles.

TARGET INFORMATION

Gene ID	55823
Gene Symbol	VPS11
Uniprot ID	VPS11_HUMAN
Immunogen	
Immunogen Region	Internal
Specificity	
Immunogen Sequence	HALQEKDTQTKLE



STJ70733 (4µg/ml) staining of paraffin embedded Human Pancreas. Steamed antigen retrieval with Tris/EDTA buffer pH 9, HRP-staining.

This product is suitable for in-vitro studies under the RESEARCH USE ONLY [RUO] licence. This product must not be used as for diagnostic or other medical purposes.
St John's Laboratory Ltd, Knowledge Dock Business Centre, University Way, London, E16 2RD | Tel: 0208 223 3081