

Anti-Renalase antibody (224-233) (STJ70700)

STJ70700

GENERAL INFORMATION

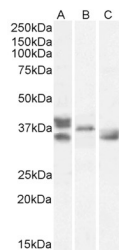
Product Type	Primary antibodies
Short Description	Goat polyclonal antibody anti-Renalase (224-233) is suitable for use in ELISA, Western Blot, Immunofluorescence and Flow Cytometry research applications.
Applications	Pep-ELISA, WB-Trf, IF, FC
Host/Source	Goat
Reactivity	Human, Mouse, Rat, Dog, Cow

PRODUCT PROPERTIES

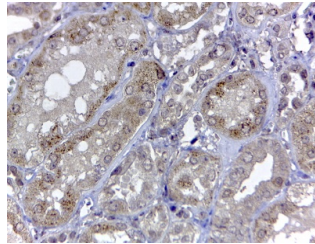
Clonality	Polyclonal
Clone ID	
Concentration	0.5 mg/mL
Conjugation	Unconjugated
Purification	Purified from goat serum by ammonium sulphate precipitation followed by antigen affinity chromatography using the immunizing peptide.
Dilution Range	ELISA-antibody detection limit dilution 1:128000.
Formulation	0.5 mg/ml in Tris saline, 0.02% sodium azide, pH7.3 with 0.5% bovine serum albumin.
Isotype	IgG
Storage	Store at -20 on receipt and minimise freeze-thaw cycles.
Instruction	

TARGET INFORMATION

Gene ID	55328
Gene Symbol	RNLS
Uniprot ID	RNLS_HUMAN
Immunogen	
Immunogen Region	224-233
Specificity	This antibody is expected to recognise both reported isoforms (NP_001026879.2 and NP_060833.1).
Immunogen Sequence	VSIDNKKRNI



STJ70700 (1µg/ml) staining of Human Heart (A), Mouse Heart (B), Rat Heart (C) lysates (35µg protein in RIPA buffer). Detected by chemiluminescence.



STJ70700 (2µg/ml) staining of paraffin embedded Human Kidney. Steamed antigen retrieval with citrate buffer pH 6, HRP-staining. This data is from a previous batch, not on sale.

This product is suitable for in-vitro studies under the RESEARCH USE ONLY [RUO] licence. This product must not be used as for diagnostic or other medical purposes.
 St John's Laboratory Ltd, Knowledge Dock Business Centre, University Way, London, E16 2RD | Tel: 0208 223 3081