

Anti-SNAP25 antibody (C-Term) (STJ70695)

STJ70695

GENERAL INFORMATION

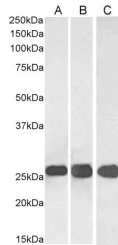
Product Type	Primary antibodies
Short Description	Goat polyclonal antibody anti-SNAP25 (C-Term) is suitable for use in ELISA and Western Blot research applications.
Applications	Pep-ELISA, WB
Host/Source	Goat
Reactivity	Human, Mouse, Rat, Dog

PRODUCT PROPERTIES

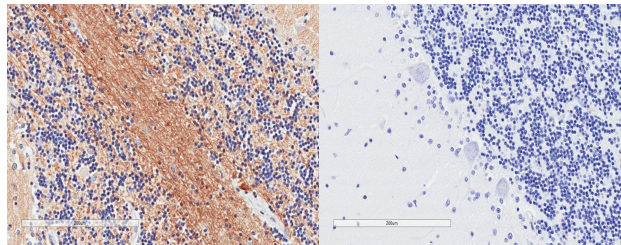
Clonality	Polyclonal
Clone ID	
Concentration	0.5 mg/mL
Conjugation	Unconjugated
Purification	Purified from goat serum by ammonium sulphate precipitation followed by antigen affinity chromatography using the immunizing peptide.
Dilution Range	WB-0.03-0.1µg/ml IHC-1-2µg/ml ELISA-antibody detection limit dilution 1:128000.
Formulation	0.5 mg/ml in Tris saline, 0.02% sodium azide, pH7.3 with 0.5% bovine serum albumin.
Isotype	IgG
Storage Instruction	Store at -20 on receipt and minimise freeze-thaw cycles.

TARGET INFORMATION

Gene ID	6616
Gene Symbol	SNAP25
Uniprot ID	SNP25_HUMAN
Immunogen Region	C-Term
Specificity	This antibody is expected to recognise both reported isoforms NP_003072.2 (SNAP25A) and NP_570824.1 (SNAP25B). Reported variants represent identical protein: NP_001309831.1, NP_003072.2 Reported variants represent identical protein: NP_001309834.1, N
Immunogen Sequence	DEANQRATKMLGSG



STJ70695 (0.03µg/ml) staining of Human Cerebellum (A), Mouse (B) and (0.05µg/ml) Rat Brain (C) lysate (35µg protein in RIPA buffer). Detected by chemiluminescence.



STJ70695 (1µg/ml) staining of paraffin-embedded Human Cerebellum. Microwaved antigen retrieval with citrate buffer Ph 6, HRP-staining.

STJ70695 Negative Control showing staining of paraffin-embedded Human Cerebellum, with no primary antibody.

This product is suitable for in-vitro studies under the RESEARCH USE ONLY [RUO] licence. This product must not be used as for diagnostic or other medical purposes.
St John's Laboratory Ltd, Knowledge Dock Business Centre, University Way, London, E16 2RD | Tel: 0208 223 3081