

## Anti-EPM2A IP1 antibody (N-Term) (STJ70644)

STJ70644

### GENERAL INFORMATION

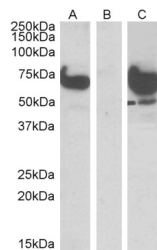
<b>Product Type</b>	Primary antibodies
<b>Short Description</b>	Goat polyclonal antibody anti-EPM2A IP1 (N-Term) is suitable for use in ELISA and Western Blot research applications.
<b>Applications</b>	Pep-ELISA, WB
<b>Host/Source</b>	Goat
<b>Reactivity</b>	Human, Mouse, Rat, Dog, Cow

### PRODUCT PROPERTIES

<b>Clonality</b>	Polyclonal
<b>Clone ID</b>	
<b>Concentration</b>	0.5 mg/mL
<b>Conjugation</b>	Unconjugated
<b>Purification</b>	Purified from goat serum by ammonium sulphate precipitation followed by antigen affinity chromatography using the immunizing peptide.
<b>Dilution Range</b>	ELISA-antibody detection limit dilution 1:16000.
<b>Formulation</b>	0.5 mg/ml in Tris saline, 0.02% sodium azide, pH7.3 with 0.5% bovine serum albumin.
<b>Isotype</b>	IgG
<b>Storage Instruction</b>	Store at -20 on receipt and minimise freeze-thaw cycles.

### TARGET INFORMATION

<b>Gene ID</b>	9852
<b>Gene Symbol</b>	EPM2AIP1
<b>Uniprot ID</b>	EPMIP_HUMAN
<b>Immunogen</b>	
<b>Immunogen Region</b>	N-Term
<b>Specificity</b>	
<b>Immunogen Sequence</b>	WMTPKRSKMEVDC



HEK293 lysate (10ug protein in RIPA buffer) overexpressing Human EPM2AIP1 with DYKDDDDK tag probed with STJ70644 (1ug/ml) in Lane A and probed with anti-DYKDDDDK Tag (1/1000) in lane C. Mock-transfected HEK293 probed with STJ70644 (1mg/ml) in Lane B. Primary incubations were for 1 hour. Detected by chemiluminescence.

This product is suitable for in-vitro studies under the RESEARCH USE ONLY [RUO] licence. This product must not be used as for diagnostic or other medical purposes.  
 St John's Laboratory Ltd, Knowledge Dock Business Centre, University Way, London, E16 2RD | Tel: 0208 223 3081