

Anti-Sorbitol Dehydrogenase antibody (C-Term) (STJ70640)

STJ70640

GENERAL INFORMATION

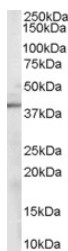
Product Type	Primary antibodies
Short Description	Goat polyclonal antibody anti-Sorbitol Dehydrogenase (C-Term) is suitable for use in ELISA, Western Blot and Immunohistochemistry research applications.
Applications	Pep-ELISA, WB, IHC
Host/Source	Goat
Reactivity	Human, Mouse, Rat, Dog

PRODUCT PROPERTIES

Clonality	Polyclonal
Clone ID	
Concentration	0.5 mg/mL
Conjugation	Unconjugated
Purification	Purified from goat serum by ammonium sulphate precipitation followed by antigen affinity chromatography using the immunizing peptide.
Dilution Range	WB-0.1-0.3µg/ml ELISA-antibody detection limit dilution 1:16000.
Formulation	0.5 mg/ml in Tris saline, 0.02% sodium azide, pH7.3 with 0.5% bovine serum albumin.
Isotype	IgG
Storage Instruction	Store at -20 on receipt and minimise freeze-thaw cycles.

TARGET INFORMATION

Gene ID	6652
Gene Symbol	SORD
Uniprot ID	DHSO_HUMAN
Immunogen	
Immunogen Region	C-Term
Specificity	
Immunogen Sequence	KIMLKCDPSDQNP



STJ70640 (0.1µg/ml) staining of Mouse Kidney lysate (35µg protein in RIPA buffer). Detected by chemiluminescence.