

Anti-RIC8A/Synembryn antibody (C-Term) (STJ70614)

STJ70614

GENERAL INFORMATION

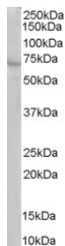
| | |
|--------------------------|---|
| Product Type | Primary antibodies |
| Short Description | Goat polyclonal antibody anti-RIC8A/Synembryn (C-Term) is suitable for use in ELISA and Western Blot research applications. |
| Applications | Pep-ELISA, WB |
| Host/Source | Goat |
| Reactivity | Human, Mouse, Rat, Cow |

PRODUCT PROPERTIES

| | |
|----------------------------|---|
| Clonality | Polyclonal |
| Clone ID | |
| Concentration | 0.5 mg/mL |
| Conjugation | Unconjugated |
| Purification | Purified from goat serum by ammonium sulphate precipitation followed by antigen affinity chromatography using the immunizing peptide. |
| Dilution Range | WB-1-3µg/ml ELISA-antibody detection limit dilution 1:32000. |
| Formulation | 0.5 mg/ml in Tris saline, 0.02% sodium azide, pH7.3 with 0.5% bovine serum albumin. |
| Isotype | IgG |
| Storage Instruction | Store at -20 on receipt and minimise freeze-thaw cycles. |

TARGET INFORMATION

| | |
|---------------------------|-------------|
| Gene ID | 60626 |
| Gene Symbol | RIC8A |
| Uniprot ID | RIC8A_HUMAN |
| Immunogen | |
| Immunogen Region | C-Term |
| Specificity | |
| Immunogen Sequence | CLSSDPDSDPD |



STJ70614 staining (1µg/ml) of human brain lysate (RIPA buffer, 35µg total protein per lane). Primary incubated for 1 hour. Detected by western blot using chemiluminescence.

This product is suitable for in-vitro studies under the RESEARCH USE ONLY [RUO] licence. This product must not be used as for diagnostic or other medical purposes.
St John's Laboratory Ltd, Knowledge Dock Business Centre, University Way, London, E16 2RD | Tel: 0208 223 3081