

Anti-ADAM12 antibody (N-Term) (STJ70610)

STJ70610

GENERAL INFORMATION

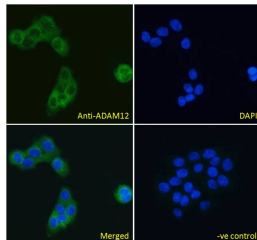
Product Type	Primary antibodies
Short Description	Goat polyclonal antibody anti-ADAM12 (N-Term) is suitable for use in ELISA and Western Blot research applications.
Applications	Pep-ELISA, WB
Host/Source	Goat
Reactivity	Human

PRODUCT PROPERTIES

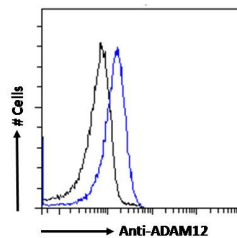
Clonality	Polyclonal
Clone ID	
Concentration	0.5 mg/mL
Conjugation	Unconjugated
Purification	Purified from goat serum by ammonium sulphate precipitation followed by antigen affinity chromatography using the immunizing peptide.
Dilution Range	IHC-3-5µg/ml, 3.75µg/ml IF-Strong expression of the protein seen in the cytoplasm and plasma membranes of A431 cells. 10µg/ml ELISA-antibody detection limit dilution 1:64000.
Formulation	0.5 mg/ml in Tris saline, 0.02% sodium azide, pH7.3 with 0.5% bovine serum albumin.
Isotype	IgG
Storage Instruction	Store at -20 on receipt and minimise freeze-thaw cycles.

TARGET INFORMATION

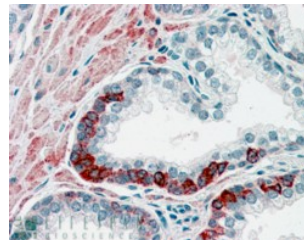
Gene ID	8038
Gene Symbol	ADAM12
Uniprot ID	ADA12_HUMAN
Immunogen	
Immunogen Region	N-Term
Specificity	This antibody is expected to recognise both the longer membrane-bound form of human ADAM12 (NP_003465.3) and the shorter soluble ADAM12 splice isoform (NP_067673.2). This antibody does not cross-react with other ADAMS.
Immunogen Sequence	AARPLPVSARALC



STJ70610 Immunofluorescence analysis of paraformaldehyde fixed A431 cells, permeabilized with 0.15% Triton. Primary incubation 1hr (10µg/ml) followed by Alexa Fluor 488 secondary antibody (4µg/ml) showing cytoplasmic/plasma membrane staining. The nuclear stain is DAPI (blue). Negative control: Unimmunized goat IgG (10µg/ml) followed by Alexa Fluor 488 secondary antibody (4µg/ml).



STJ70610 Flow cytometric analysis of paraformaldehyde fixed HeLa cells (blue line) permeabilized with 0.5% Triton. Primary incubation 1hr (10µg/ml) followed by Alexa Fluor 488 secondary antibody (0.4µg/ml). IgG control: Unimmunized goat IgG (black line) followed by Alexa Fluor 488 secondary antibody.



STJ70610 (3.8µg/ml) staining of paraffin embedded Human Prostate. Steamed antigen retrieval with citrate buffer pH6, AP-staining.

This product is suitable for in-vitro studies under the RESEARCH USE ONLY [RUO] licence. This product must not be used as for diagnostic or other medical purposes.

St John's Laboratory Ltd, Knowledge Dock Business Centre, University Way, London, E16 2RD | Tel: 0208 223 3081