

Anti-CREM antibody (C-Term) (STJ70609)

STJ70609

GENERAL INFORMATION

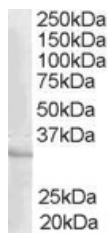
Product Type	Primary antibodies
Short Description	Goat polyclonal antibody anti-CREM (C-Term) is suitable for use in ELISA, Western Blot and Immunohistochemistry research applications.
Applications	Pep-ELISA, WB, IHC
Host/Source	Goat
Reactivity	Human, Mouse, Rat, Cow

PRODUCT PROPERTIES

Clonality	Polyclonal
Clone ID	
Concentration	0.5 mg/mL
Conjugation	Unconjugated
Purification	Purified from goat serum by ammonium sulphate precipitation followed by antigen affinity chromatography using the immunizing peptide.
Dilution Range	WB-0.3-1µg/ml ELISA-antibody detection limit dilution 1:16000.
Formulation	0.5 mg/ml in Tris saline, 0.02% sodium azide, pH7.3 with 0.5% bovine serum albumin.
Isotype	IgG
Storage Instruction	Store at -20 on receipt and minimise freeze-thaw cycles.

TARGET INFORMATION

Gene ID	1390
Gene Symbol	CREM
Uniprot ID	CREM_HUMAN
Immunogen Region	C-Term
Specificity	This antibody is expected to recognise the following protein isoforms of human CREM protein: a (NP_853549.1) ; e (NP_874387.1) ; f (NP_874388.1) ; k (NP_874393.1) ; l (NP_874394.1) ; m (NP_877570.1) ; n (NP_877571.1) ; o (NP_877572.1) ; p (NP_877573.1)
Immunogen Sequence	LETLKDICSPKTDY



STJ70609 staining (1µg/ml) of Human Heart lysate (RIPA buffer, 35µg total protein per lane). Primary incubated for 1 hour. Detected by chemiluminescence.

This product is suitable for in-vitro studies under the RESEARCH USE ONLY [RUO] licence. This product must not be used as for diagnostic or other medical purposes.
St John's Laboratory Ltd, Knowledge Dock Business Centre, University Way, London, E16 2RD | Tel: 0208 223 3081