

Anti-RXR beta antibody (Internal) (STJ70606)

STJ70606

GENERAL INFORMATION

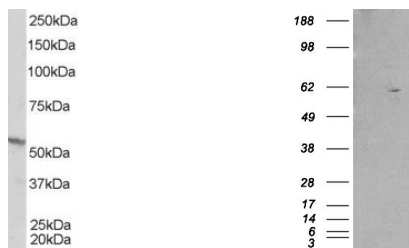
Product Type	Primary antibodies
Short Description	Goat polyclonal antibody anti-RXR beta (Internal) is suitable for use in ELISA, Western Blot and Immunohistochemistry research applications.
Applications	Pep-ELISA, WB, IHC
Host/Source	Goat
Reactivity	Human, Mouse, Rat, Dog, Pig, Cow

PRODUCT PROPERTIES

Clonality	Polyclonal
Clone ID	
Concentration	0.5 mg/mL
Conjugation	Unconjugated
Purification	Purified from goat serum by ammonium sulphate precipitation followed by antigen affinity chromatography using the immunizing peptide.
Dilution Range	ELISA-antibody detection limit dilution 1:128000.
Formulation	0.5 mg/ml in Tris saline, 0.02% sodium azide, pH7.3 with 0.5% bovine serum albumin.
Isotype	IgG
Storage	Store at -20 on receipt and minimise freeze-thaw cycles.
Instruction	

TARGET INFORMATION

Gene ID	6257
Gene Symbol	RXRB
Uniprot ID	RXRB_HUMAN
Immunogen	
Immunogen Region	Internal
Specificity	This antibody is expected to recognise an epitope corresponding to aa 70-83 of human RXR beta protein and does not cross-react with either RXR alpha or gamma.
Immunogen Sequence	CRDGMGDSGRDSRSP



STJ70606 staining (1 µg/ml) of A431 lysate (RIPA buffer, 35 µg total protein per lane). Primary incubated for 1 hour. Detected by western blot using chemiluminescence.

HEK293 overexpressing RXRB (RC200516) and probed with STJ70606 (mock transfection in first lane), tested by Origene.

This product is suitable for in-vitro studies under the RESEARCH USE ONLY [RUO] licence. This product must not be used as for diagnostic or other medical purposes.
 St John's Laboratory Ltd, Knowledge Dock Business Centre, University Way, London, E16 2RD | Tel: 0208 223 3081