

Anti-LXR alpha/LXR beta antibody (Internal) (STJ70604)

STJ70604

GENERAL INFORMATION

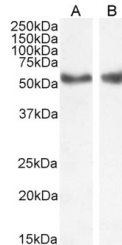
Product Type	Primary antibodies
Short Description	Goat polyclonal antibody anti-LXR alpha/LXR beta (Internal) is suitable for use in ELISA and Western Blot research applications.
Applications	Pep-ELISA, WB
Host/Source	Goat
Reactivity	Human, Mouse, Rat, Dog, Cow

PRODUCT PROPERTIES

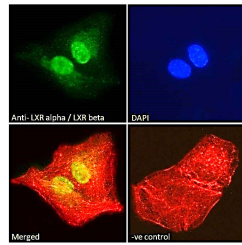
Clonality	Polyclonal
Clone ID	
Concentration	0.5 mg/mL
Conjugation	Unconjugated
Purification	Purified from goat serum by ammonium sulphate precipitation followed by antigen affinity chromatography using the immunizing peptide.
Dilution Range	IF-Strong expression of the protein seen in the nuclei of A549 cells. 10µg/ml FC-Flow cytometric analysis of A549 cells. 10µg/ml ELISA-antibody detection limit dilution 1:32000.
Formulation	0.5 mg/ml in Tris saline, 0.02% sodium azide, pH7.3 with 0.5% bovine serum albumin.
Isotype	IgG
Storage Instruction	Store at -20 on receipt and minimise freeze-thaw cycles.

TARGET INFORMATION

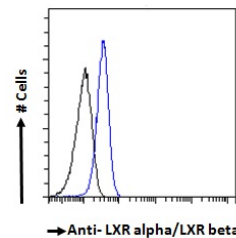
Gene ID	10062
Gene Symbol	NR1H3
Uniprot ID	NR1H3_HUMAN
Immunogen	Internal
Region	
Specificity	This antibody is expected to recognise epitopes including aa 429-442 of human LXR alpha protein (NP_005684.2) and aa 443-456 of human LXR beta protein (NP_009052.3).
Immunogen Sequence	CRLQDKKLPLLSEI



STJ70604 (1µg/ml) staining of Human Liver (A) and Kidney (B) lysate (35µg protein in RIPA buffer). Detected by chemiluminescence.



STJ70604 Immunofluorescence analysis of paraformaldehyde fixed A549 cells, permeabilized with 0.15% Triton, primary incubation 1hr (10µg/ml) followed by Alexa Fluor 488 secondary antibody (2µg/ml), showing nuclear and weak cytoplasmic staining. Actin filaments were stained with phalloidin (red) and the nuclear stain is DAPI (blue). Negative control: Unimmunized goat IgG (10µg/ml) followed by Alexa Fluor 488 secondary antibody (2µg/ml).



STJ70604 Flow cytometric analysis of paraformaldehyde fixed A549 cells (blue line), permeabilized with 0.5% Triton. Primary incubation 1hr (10µg/ml) followed by Alexa Fluor 488 secondary antibody (1µg/ml). IgG control: Unimmunized goat IgG (black line) followed by Alexa Fluor 488 secondary antibody.

This product is suitable for in-vitro studies under the RESEARCH USE ONLY [RUO] licence. This product must not be used as for diagnostic or other medical purposes.
St John's Laboratory Ltd, Knowledge Dock Business Centre, University Way, London, E16 2RD | Tel: 0208 223 3081