

Anti-FHL1/SLIM1 antibody (Internal) (STJ70598)

STJ70598

GENERAL INFORMATION

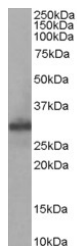
| | |
|--------------------------|--|
| Product Type | Primary antibodies |
| Short Description | Goat polyclonal antibody anti-FHL1/SLIM1 (Internal) is suitable for use in ELISA and Western Blot research applications. |
| Applications | Pep-ELISA, WB |
| Host/Source | Goat |
| Reactivity | Human, Mouse, Rat, Dog, Pig, Cow |

PRODUCT PROPERTIES

| | |
|----------------------------|---|
| Clonality | Polyclonal |
| Clone ID | |
| Concentration | 0.5 mg/mL |
| Conjugation | Unconjugated |
| Purification | Purified from goat serum by ammonium sulphate precipitation followed by antigen affinity chromatography using the immunizing peptide. |
| Dilution | WB-0.05-0.3µg/ml |
| Range | IHC-2µg/ml ELISA-antibody detection limit dilution 1:32000. |
| Formulation | 0.5 mg/ml in Tris saline, 0.02% sodium azide, pH7.3 with 0.5% bovine serum albumin. |
| Isotype | IgG |
| Storage Instruction | Store at -20 on receipt and minimise freeze-thaw cycles. |

TARGET INFORMATION

| | |
|---------------------------|--|
| Gene ID | 2273 |
| Gene Symbol | FHL1 |
| Uniprot ID | FHL1_HUMAN |
| Immunogen | Internal |
| Region | |
| Specificity | This antibody is expected to recognise isoforms 2 (NP_001440.1) and 5 (NP_001153171.1). Since June 2009 the second N residue in the immunizing peptide is no longer representative as it has been substituted by Q at position 284 of NP_001440.2. Variant |
| Immunogen Sequence | CNKRFVFNQVY |



STJ70598 staining (0.05µg/ml) of Human Muscle lysate (RIPA buffer, 35µg total protein per lane). Detected by chemiluminescence.

This product is suitable for in-vitro studies under the RESEARCH USE ONLY [RUO] licence. This product must not be used as for diagnostic or other medical purposes.
St John's Laboratory Ltd, Knowledge Dock Business Centre, University Way, London, E16 2RD | Tel: 0208 223 3081