

Anti-EHD2 antibody (C-Term) (STJ70596)

STJ70596

GENERAL INFORMATION

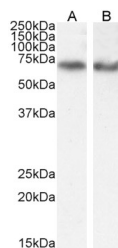
Product Type	Primary antibodies
Short Description	Goat polyclonal antibody anti-EHD2 (C-Term) is suitable for use in ELISA, Immunohistochemistry and Flow Cytometry research applications.
Applications	Pep-ELISA, IHC, FC
Host/Source	Goat
Reactivity	Human, Mouse, Rat, Dog, Cow

PRODUCT PROPERTIES

Clonality	Polyclonal
Clone ID	
Concentration	0.5 mg/mL
Conjugation	Unconjugated
Purification	Purified from goat serum by ammonium sulphate precipitation followed by antigen affinity chromatography using the immunizing peptide.
Dilution Range	WB-0.1-0.3µg/ml IF-Strong expression of the protein seen in the plasma membrane of A431 cells and the nuclei of HeLa cells. 10µg/ml ELISA-antibody detection limit dilution 1:64000.
Formulation	0.5 mg/ml in Tris saline, 0.02% sodium azide, pH7.3 with 0.5% bovine serum albumin.
Isotype	IgG
Storage Instruction	Store at -20 on receipt and minimise freeze-thaw cycles.

TARGET INFORMATION

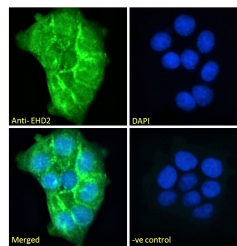
Gene ID	30846
Gene Symbol	EHD2
Uniprot ID	EHD2_HUMAN
Immunogen	
Immunogen Region	C-Term
Specificity	This antibody is expected to recognise EHD1 protein as well as EHD2.
Immunogen Sequence	CRLVPPSKRRRHKGSA



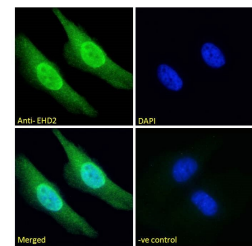
STJ70596 (0.1µg/ml) staining of A549 (A) and (0.3µg/ml) HeLa (B) cell lysate (35µg protein in RIPA buffer). Detected by chemiluminescence.



STJ70596 (0.3µg/ml) staining of Human Lung lysate (35µg protein in RIPA buffer). Detected by chemiluminescence.



STJ70596 Immunofluorescence analysis of paraformaldehyde fixed A431 cells, permeabilized with 0.15% Triton. Primary incubation 1hr (10µg/ml) followed by Alexa Fluor 488 secondary antibody (2µg/ml), showing plasma membrane staining. The nuclear stain is DAPI (blue). Negative control: Unimmunized goat IgG (10µg/ml) followed by Alexa Fluor 488 secondary antibody (2µg/ml).



STJ70596 Immunofluorescence analysis of paraformaldehyde fixed HeLa cells, permeabilized with 0.15% Triton. Primary incubation 1hr (10µg/ml) followed by Alexa Fluor 488 secondary antibody (2µg/ml), showing nuclear and cytoplasmic staining. The nuclear stain is DAPI (blue). Negative control: Unimmunized goat IgG (10µg/ml) followed by Alexa Fluor 488 secondary antibody (2µg/ml).

This product is suitable for in-vitro studies under the RESEARCH USE ONLY [RUO] licence. This product must not be used as for diagnostic or other medical purposes.

St John's Laboratory Ltd, Knowledge Dock Business Centre, University Way, London, E16 2RD | Tel: 0208 223 3081