

Anti-58KGolgi protein (Internal) /FTCD antibody (Internal) (STJ70578)

STJ70578

GENERAL INFORMATION

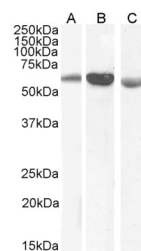
Product Type	Primary antibodies
Short Description	Goat polyclonal antibody anti-58KGolgi protein (Internal) /FTCD (Internal) is suitable for use in ELISA, Immunofluorescence, Immunohistochemistry and Flow Cytometry research applications.
Applications	Pep-ELISA, IF, IHC, FC
Host/Source	Goat
Reactivity	Human, Mouse, Rat, Pig, Cow

PRODUCT PROPERTIES

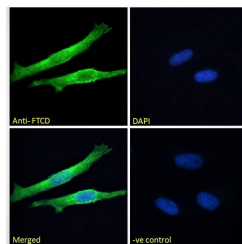
Clonality	Polyclonal
Clone ID	
Concentration	0.5 mg/mL
Conjugation	Unconjugated
Purification	Purified from goat serum by ammonium sulphate precipitation followed by antigen affinity chromatography using the immunizing peptide.
Dilution Range	IF-Strong expression of the protein seen in the cytoplasm and plasma membranes of HeLa and in the membranes of HepG2 cells. 10µg/ml ELISA-antibody detection limit dilution 1:64000.
Formulation	0.5 mg/ml in Tris saline, 0.02% sodium azide, pH7.3 with 0.5% bovine serum albumin.
Isotype	IgG
Storage Instruction	Store at -20 on receipt and minimise freeze-thaw cycles.

TARGET INFORMATION

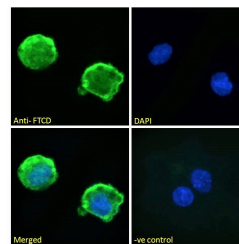
Gene ID	10841
Gene Symbol	FTCD
Uniprot ID	FTCD_HUMAN
Immunogen	Internal
Region	
Specificity	Variants (NP_006648.1; NP_996848.1) encode the same protein.
Immunogen Sequence	CLREQGRGKDQPGRL



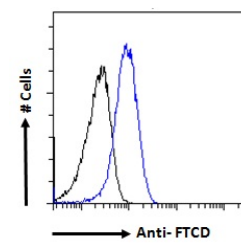
STJ70578 (0.1µg/ml) staining of Human (A) of Mouse (B) and (0.3µg/ml) of Pig (C) Liver lysate (35µg protein in RIPA buffer). Detected by chemiluminescence.



STJ70578 Immunofluorescence analysis of paraformaldehyde fixed HeLa cells, permeabilized with 0.15% Triton. Primary incubation 1hr (10µg/ml) followed by Alexa Fluor 488 secondary antibody (2µg/ml), showing plasma membrane and cytoplasmic staining. The nuclear stain is DAPI (blue). Negative control: Unimmunized goat IgG (10µg/ml) followed by Alexa Fluor 488 secondary antibody (2µg/ml)



STJ70578 Immunofluorescence analysis of paraformaldehyde fixed HepG2 cells, permeabilized with 0.15% Triton. Primary incubation 1hr (10µg/ml) followed by Alexa Fluor 488 secondary antibody (2µg/ml), showing membrane staining. The nuclear stain is DAPI (blue). Negative control: Unimmunized goat IgG (10µg/ml) followed by Alexa Fluor 488 secondary antibody (2µg/ml).



STJ70578 Flow cytometric analysis of paraformaldehyde fixed HepG2 cells (blue line), permeabilized with 0.5% Triton. Primary incubation 1hr (10µg/ml) followed by Alexa Fluor 488 secondary antibody (1µg/ml). IgG control: Unimmunized goat IgG (black line) followed by Alexa Fluor 488 secondary antibody.

This product is suitable for in-vitro studies under the RESEARCH USE ONLY [RUO] licence. This product must not be used as for diagnostic or other medical purposes.
St John's Laboratory Ltd, Knowledge Dock Business Centre, University Way, London, E16 2RD | Tel: 0208 223 3081