

Anti-Lime1-Mouse antibody (C-Term) (STJ70557)

STJ70557

GENERAL INFORMATION

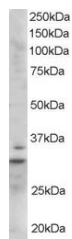
| | |
|--------------------------|---|
| Product Type | Primary antibodies |
| Short Description | Goat polyclonal antibody anti-Lime1-Mouse (C-Term) is suitable for use in ELISA, Western Blot, Immunofluorescence and Immunohistochemistry research applications. |
| Applications | Pep-ELISA, WB, IF, IHC |
| Host/Source | Goat |
| Reactivity | Mouse, Rat |

PRODUCT PROPERTIES

| | |
|----------------------------|---|
| Clonality | Polyclonal |
| Clone ID | |
| Concentration | 0.5 mg/mL |
| Conjugation | Unconjugated |
| Purification | Purified from goat serum by ammonium sulphate precipitation followed by antigen affinity chromatography using the immunizing peptide. |
| Dilution Range | WB-Recommended for use at 0.5-2µg/ml ELISA-antibody detection limit dilution 1:128000. |
| Formulation | 0.5 mg/ml in Tris saline, 0.02% sodium azide, pH7.3 with 0.5% bovine serum albumin. |
| Isotype | IgG |
| Storage Instruction | Store at -20 on receipt and minimise freeze-thaw cycles. |

TARGET INFORMATION

| | |
|---------------------------|--------------|
| Gene ID | |
| Gene Symbol | |
| Uniprot ID | |
| Immunogen | |
| Immunogen Region | C-Term |
| Specificity | |
| Immunogen Sequence | ENVYESIKEMGL |



STJ70557 staining (1µg/ml) of Mouse Heart lysate (RIPA buffer, 35µg total protein per lane). Primary incubated for 1 hour. Detected by western blot using chemiluminescence.