

Anti-VPS35/MEM3 antibody (C-Term) (STJ70506)

STJ70506

GENERAL INFORMATION

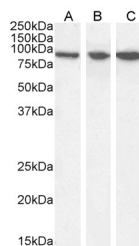
Product Type	Primary antibodies
Short Description	Goat polyclonal antibody anti-VPS35/MEM3 (C-Term) is suitable for use in ELISA and Western Blot research applications.
Applications	Pep-ELISA, WB
Host/Source	Goat
Reactivity	Human, Mouse, Rat, Cow

PRODUCT PROPERTIES

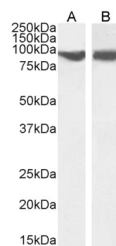
Clonality	Polyclonal
Clone ID	
Concentration	0.5 mg/mL
Conjugation	Unconjugated
Purification	Purified from goat serum by ammonium sulphate precipitation followed by antigen affinity chromatography using the immunizing peptide.
Dilution Range	IHC-8µg/ml IF-Strong expression of the protein seen in the cytoplasm/vesicles of HEK293 and U2OS cells. 10µg/ml ELISA-antibody detection limit dilution 1:128000.
Formulation	0.5 mg/ml in Tris saline, 0.02% sodium azide, pH7.3 with 0.5% bovine serum albumin.
Isotype	IgG
Storage Instruction	Store at-20 on receipt and minimise freeze-thaw cycles.

TARGET INFORMATION

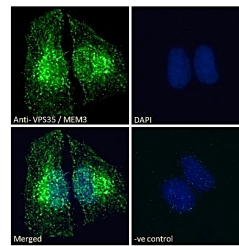
Gene ID	55737
Gene Symbol	VPS35
Uniprot ID	VPS35_HUMAN
Immunogen	
Immunogen Region	C-Term
Specificity	Note there is a hypothetical protein called similar to vacuolar protein sorting 35 (XP_040192.1) , which is virtually identical.
Immunogen Sequence	SPESEGPIYEGLLI



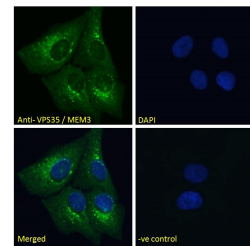
STJ70506 (0.03µg/ml) staining of Human (A) Mouse (B) and Rat (C) Brain lysate (35µg protein in RIPA buffer). Detected by chemiluminescence.



STJ70506 (0.03µg/ml) staining of HepG2 (A) and HEK293 (B) cell lysate (35µg protein in RIPA buffer). Detected by chemiluminescence.



STJ70506 Immunofluorescence analysis of paraformaldehyde fixed HEK293 cells, permeabilized with 0.15% Triton. Primary incubation 1hr (10µg/ml) followed by Alexa Fluor 488 secondary antibody (2µg/ml) , showing cytoplasmic/vesicle staining. The nuclear stain is DAPI (blue). NA NA NA Negative control: Unimmunized goat IgG (10µg/ml) followed by Alexa Fluor 488 secondary antibody (2µg/ml).



STJ70506 Immunofluorescence analysis of paraformaldehyde fixed U2OS cells, permeabilized with 0.15% Triton. Primary incubation 1hr (10µg/ml) followed by Alexa Fluor 488 secondary antibody (2µg/ml) , showing cytoplasmic/vesicle staining. The nuclear stain is DAPI (blue). NA NA NA Negative control: Unimmunized goat IgG (10µg/ml) followed by Alexa Fluor 488 secondary antibody (2µg/ml).

This product is suitable for in-vitro studies under the RESEARCH USE ONLY [RUO] licence. This product must not be used as for diagnostic or other medical purposes.
St John's Laboratory Ltd, Knowledge Dock Business Centre, University Way, London, E16 2RD | Tel: 0208 223 3081