

Anti-PAR6alpha/PARD6A antibody (C-Term) (STJ70485)

STJ70485

GENERAL INFORMATION

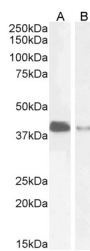
| | |
|--------------------------|--|
| Product Type | Primary antibodies |
| Short Description | Goat polyclonal antibody anti-PAR6alpha/PARD6A (C-Term) is suitable for use in ELISA and Immunohistochemistry research applications. |
| Applications | Pep-ELISA, IHC |
| Host/Source | Goat |
| Reactivity | Human |

PRODUCT PROPERTIES

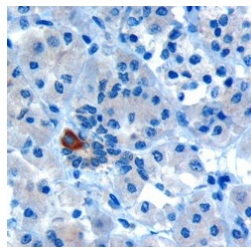
| | |
|----------------------------|---|
| Clonality | Polyclonal |
| Clone ID | |
| Concentration | 0.5 mg/mL |
| Conjugation | Unconjugated |
| Purification | Purified from goat serum by ammonium sulphate precipitation followed by antigen affinity chromatography using the immunizing peptide. |
| Dilution Range | WB-1-3µg/ml IHC-10µg/ml FC-Flow cytometric analysis of Jurkat cells. 10ug/ml ELISA-antibody detection limit dilution 1:8000. |
| Formulation | 0.5 mg/ml in Tris saline, 0.02% sodium azide, pH7.3 with 0.5% bovine serum albumin. |
| Isotype | IgG |
| Storage Instruction | Store at -20 on receipt and minimise freeze-thaw cycles. |

TARGET INFORMATION

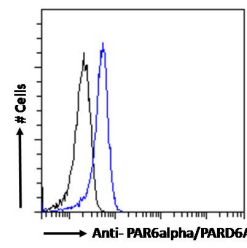
| | |
|---------------------------|--|
| Gene ID | 50855 |
| Gene Symbol | PARD6A |
| Uniprot ID | PAR6A_HUMAN |
| Immunogen | |
| Immunogen Region | C-Term |
| Specificity | This antibody is expected to recognise both reported isoforms (NP_058644.1; NP_001032358.1). |
| Immunogen Sequence | GSRIIRGDGSGFSL |



STJ70485 (2µg/ml) staining of Jurkat (A) and U251 (B) cell lysate (35µg protein in RIPA buffer). Detected by chemiluminescence.



STJ70485 (10µg/ml) staining of paraffin embedded Human Pancreas. Microwaved antigen retrieval with Tris/EDTA buffer pH9, HRP-staining.



STJ70485 Flow cytometric analysis of paraformaldehyde fixed Jurkat cells (blue line), permeabilized with 0.5% Triton. Primary incubation 1hr (10µg/ml) followed by Alexa Fluor 488 secondary antibody (1µg/ml). IgG control: Unimmunized goat IgG (black line) followed by Alexa Fluor 488 secondary antibody.

This product is suitable for in-vitro studies under the RESEARCH USE ONLY [RUO] licence. This product must not be used as for diagnostic or other medical purposes.
St John's Laboratory Ltd, Knowledge Dock Business Centre, University Way, London, E16 2RD | Tel: 0208 223 3081