

Anti-GIPC1/NIP antibody (C-Term) (STJ70475)

STJ70475

GENERAL INFORMATION

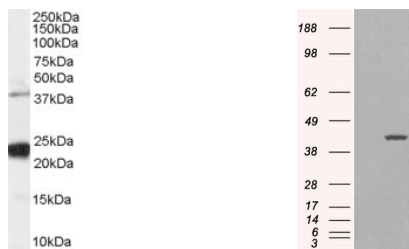
Product Type	Primary antibodies
Short Description	Goat polyclonal antibody anti-GIPC1/NIP (C-Term) is suitable for use in ELISA and Immunofluorescence research applications.
Applications	Pep-ELISA, IF
Host/Source	Goat
Reactivity	Human, Mouse, Rat, Cow

PRODUCT PROPERTIES

Clonality	Polyclonal
Clone ID	
Concentration	0.5 mg/mL
Conjugation	Unconjugated
Purification	Purified from goat serum by ammonium sulphate precipitation followed by antigen affinity chromatography using the immunizing peptide.
Dilution Range	ELISA-antibody detection limit dilution 1:128000.
Formulation	0.5 mg/ml in Tris saline, 0.02% sodium azide, pH7.3 with 0.5% bovine serum albumin.
Isotype	IgG
Storage Instruction	Store at -20 on receipt and minimise freeze-thaw cycles.

TARGET INFORMATION

Gene ID	10755
Gene Symbol	GIPC1
Uniprot ID	GIPC1_HUMAN
Immunogen Region	C-Term
Specificity	This antibody is expected to recognize both isoform 1 (NP_005707.1, NP_974197.1 and NP_974199.1) and isoform 2 (NP_974196.1, NP_974198.1 and NP_974223.1).
Immunogen Sequence	GAIGDAKVGGRY



STJ70475 staining (0.03µg/ml) of Human HeLa cell lysate (RIPA buffer, 35µg total protein per lane). Primary incubated for 1 hour. Detected by chemiluminescence.

HEK293 overexpressing GIPC1 isoform 1 (RC216466) and probed with STJ70475 (mock transfection in first lane), tested by Origene.

This product is suitable for in-vitro studies under the RESEARCH USE ONLY [RUO] licence. This product must not be used as for diagnostic or other medical purposes.
 St John's Laboratory Ltd, Knowledge Dock Business Centre, University Way, London, E16 2RD | Tel: 0208 223 3081