

Anti-NET1/ARHGEF8 antibody (C-Term) (STJ70453)

STJ70453

GENERAL INFORMATION

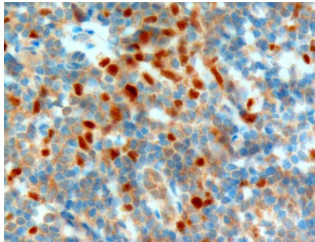
Product Type	Primary antibodies
Short Description	Goat polyclonal antibody anti-NET1/ARHGEF8 (C-Term) is suitable for use in ELISA and Immunofluorescence research applications.
Applications	Pep-ELISA, IF
Host/Source	Goat
Reactivity	Human, Mouse

PRODUCT PROPERTIES

Clonality	Polyclonal
Clone ID	
Concentration	0.5 mg/mL
Conjugation	Unconjugated
Purification	Purified from goat serum by ammonium sulphate precipitation followed by antigen affinity chromatography using the immunizing peptide.
Dilution Range	IHC-Recommended concentration, 1-2µg/ml ELISA-antibody detection limit dilution 1:128000.
Formulation	0.5 mg/ml in Tris saline, 0.02% sodium azide, pH7.3 with 0.5% bovine serum albumin.
Isotype	IgG
Storage Instruction	Store at -20 on receipt and minimise freeze-thaw cycles.

TARGET INFORMATION

Gene ID	10276
Gene Symbol	NET1
Uniprot ID	ARHG8_HUMAN
Immunogen	
Immunogen Region	C-Term
Specificity	This antibody is expected to recognize both reported isoforms (NP_001040625.1 and NP_005854.2).
Immunogen Sequence	DKALSGGKRKETLV



EB6148 (1µg/ml) staining of paraffin embedded Human Tonsil. Microwaved antigen retrieval with citrate buffer pH 6, HRP-staining.

This product is suitable for in-vitro studies under the RESEARCH USE ONLY [RUO] licence. This product must not be used as for diagnostic or other medical purposes.
St John's Laboratory Ltd, Knowledge Dock Business Centre, University Way, London, E16 2RD | Tel: 0208 223 3081