

Anti-Kalirin antibody (C-Term) (STJ70450)

STJ70450

GENERAL INFORMATION

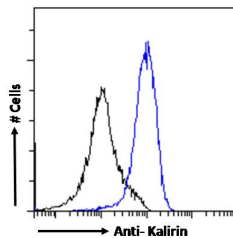
Product Type	Primary antibodies
Short Description	Goat polyclonal antibody anti-Kalirin (C-Term) is suitable for use in ELISA, Immunofluorescence and Western Blot research applications.
Applications	Pep-ELISA, IF, WB
Host/Source	Goat
Reactivity	Human, Mouse

PRODUCT PROPERTIES

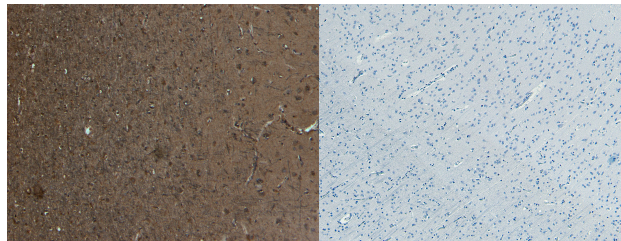
Clonality	Polyclonal
Clone ID	
Concentration	0.5 mg/mL
Conjugation	Unconjugated
Purification	Purified from goat serum by ammonium sulphate precipitation followed by antigen affinity chromatography using the immunizing peptide.
Dilution Range	IHC-4-5µg/ml FC-Flow cytometric analysis of HepG2 cells. 10ug/ml ELISA-antibody detection limit dilution 1:16000.
Formulation	0.5 mg/ml in Tris saline, 0.02% sodium azide, pH7.3 with 0.5% bovine serum albumin.
Isotype	IgG
Storage Instruction	Store at -20 on receipt and minimise freeze-thaw cycles.

TARGET INFORMATION

Gene ID	8997
Gene Symbol	KALRN
Uniprot ID	KALRN_HUMAN
Immunogen	
Region	C-Term
Specificity	This antibody is expected to recognise NP_003938.1; (isoform 2) , NP_001309918..1 (9isoform 5) , NP_001309919.1; (isoform 6) , NP_001309920.1 (isoform 7) , and NP_001309921.1 (isoform 8).
Immunogen Sequence	RWHLGPGDPFSTYV



STJ70450 Flow cytometric analysis of paraformaldehyde fixed A431 cells (blue line) , permeabilized with 0.5% Triton. Primary incubation 1hr (10ug/ml) followed by Alexa Fluor 488 secondary antibody (1ug/ml). IgG control: Unimmunized goat IgG (black line) followed by Alexa Fluor 488 secondary antibody.



STJ70450 (5ug/ml) staining of paraffin embedded Human Cortex. Heat induced antigen retrieval with citrate buffer pH 6, HRP-staining.

STJ70450 Negative Control showing staining of paraffin embedded Human Cortex, with no primary antibody.

This product is suitable for in-vitro studies under the RESEARCH USE ONLY [RUO] licence. This product must not be used as for diagnostic or other medical purposes.

St John's Laboratory Ltd, Knowledge Dock Business Centre, University Way, London, E16 2RD | Tel: 0208 223 3081