

Anti-CENTA2 antibody (C-Term) (STJ70438)

STJ70438

GENERAL INFORMATION

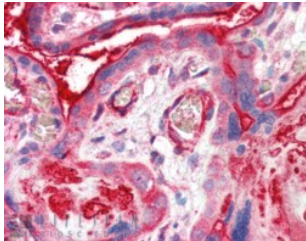
Product Type	Primary antibodies
Short Description	Goat polyclonal antibody anti-CENTA2 (C-Term) is suitable for use in ELISA and Western Blot research applications.
Applications	Pep-ELISA, WB-Trf
Host/Source	Goat
Reactivity	Human

PRODUCT PROPERTIES

Clonality	Polyclonal
Clone ID	
Concentration	0.5 mg/mL
Conjugation	Unconjugated
Purification	Purified from goat serum by ammonium sulphate precipitation followed by antigen affinity chromatography using the immunizing peptide.
Dilution Range	IHC-Recommended concentration, 5-10µg/ml ELISA-antibody detection limit dilution 1:32000.
Formulation	0.5 mg/ml in Tris saline, 0.02% sodium azide, pH7.3 with 0.5% bovine serum albumin.
Isotype	IgG
Storage Instruction	Store at -20 on receipt and minimise freeze-thaw cycles.

TARGET INFORMATION

Gene ID	55803
Gene Symbol	ADAP2
Uniprot ID	ADAP2_HUMAN
Immunogen	
Immunogen Region	C-Term
Specificity	
Immunogen Sequence	RLTASTESGRSSR



STJ70438 (5µg/ml) staining of paraffin embedded Human Placenta. Steamed antigen retrieval with citrate buffer pH 6, AP-staining.