

Anti-FOXE1/TTF2 antibody (C-Term) (STJ70388)

STJ70388

GENERAL INFORMATION

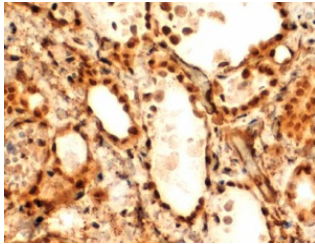
Product Type	Primary antibodies
Short Description	Goat polyclonal antibody anti-FOXE1/TTF2 (C-Term) is suitable for use in ELISA, Immunofluorescence and Flow Cytometry research applications.
Applications	Pep-ELISA, IF, FC
Host/Source	Goat
Reactivity	Human

PRODUCT PROPERTIES

Clonality	Polyclonal
Clone ID	
Concentration	0.5 mg/mL
Conjugation	Unconjugated
Purification	Purified from goat serum by ammonium sulphate precipitation followed by antigen affinity chromatography using the immunizing peptide.
Dilution Range	IHC-2-4µg/ml, 5µg/ml ELISA-antibody detection limit dilution 1:8000.
Formulation	0.5 mg/ml in Tris saline, 0.02% sodium azide, pH7.3 with 0.5% bovine serum albumin.
Isotype	IgG
Storage Instruction	Store at -20 on receipt and minimise freeze-thaw cycles.

TARGET INFORMATION

Gene ID	2304
Gene Symbol	FOXE1
Uniprot ID	FOXE1_HUMAN
Immunogen	
Immunogen Region	C-Term
Specificity	
Immunogen Sequence	AYPGGIDRFVSAM



STJ70388 (2µg/ml) staining of paraffin embedded Human Thyroid Gland. Steamed antigen retrieval with Tris/EDTA buffer pH 9, HRP-staining.

This product is suitable for in-vitro studies under the RESEARCH USE ONLY [RUO] licence. This product must not be used as for diagnostic or other medical purposes.
St John's Laboratory Ltd, Knowledge Dock Business Centre, University Way, London, E16 2RD | Tel: 0208 223 3081