

Anti-CHFR antibody (C-Term) (STJ70311)

STJ70311

GENERAL INFORMATION

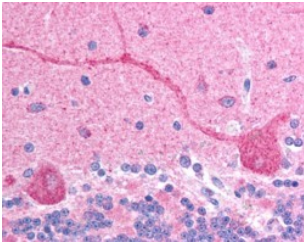
Product Type	Primary antibodies
Short Description	Goat polyclonal antibody anti-CHFR (C-Term) is suitable for use in ELISA and Western Blot research applications.
Applications	Pep-ELISA, WB
Host/Source	Goat
Reactivity	Human, Mouse, Rat, Pig, Cow

PRODUCT PROPERTIES

Clonality	Polyclonal
Clone ID	
Concentration	0.5 mg/mL
Conjugation	Unconjugated
Purification	Purified from goat serum by ammonium sulphate precipitation followed by antigen affinity chromatography using the immunizing peptide.
Dilution Range	IHC-2.5µg/ml ELISA-antibody detection limit dilution 1:64000.
Formulation	0.5 mg/ml in Tris saline, 0.02% sodium azide, pH7.3 with 0.5% bovine serum albumin.
Isotype	IgG
Storage Instruction	Store at -20 on receipt and minimise freeze-thaw cycles.

TARGET INFORMATION

Gene ID	55743
Gene Symbol	CHFR
Uniprot ID	CHFR_HUMAN
Immunogen	
Immunogen Region	C-Term
Specificity	This antibody is expected to recognise all reported isoforms.
Immunogen Sequence	KFNHICEQTRFKN



STJ70311 (2.5µg/ml) staining of paraffin embedded human brain (cerebellum). Steamed antigen retrieval with citrate buffer pH 6, AP-staining.

This product is suitable for in-vitro studies under the RESEARCH USE ONLY [RUO] licence. This product must not be used as for diagnostic or other medical purposes.
St John's Laboratory Ltd, Knowledge Dock Business Centre, University Way, London, E16 2RD | Tel: 0208 223 3081