

Anti-ARIH1/HHARI antibody (C-Term) (STJ70308)

STJ70308

GENERAL INFORMATION

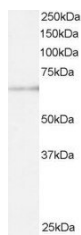
Product Type	Primary antibodies
Short Description	Goat polyclonal antibody anti-ARIH1/HHARI (C-Term) is suitable for use in ELISA, Western Blot and Immunohistochemistry research applications.
Applications	Pep-ELISA, WB, IHC
Host/Source	Goat
Reactivity	Human, Mouse, Cow

PRODUCT PROPERTIES

Clonality	Polyclonal
Clone ID	
Concentration	0.5 mg/mL
Conjugation	Unconjugated
Purification	Purified from goat serum by ammonium sulphate precipitation followed by antigen affinity chromatography using the immunizing peptide.
Dilution Range	WB-Recommended for use at 0.2-1 µg/ml IHC-5 µg/ml ELISA-antibody detection limit dilution 1:32000.
Formulation	0.5 mg/ml in Tris saline, 0.02% sodium azide, pH7.3 with 0.5% bovine serum albumin.
Isotype	IgG
Storage Instruction	Store at -20 on receipt and minimise freeze-thaw cycles.

TARGET INFORMATION

Gene ID	25820
Gene Symbol	ARIH1
Uniprot ID	ARI1_HUMAN
Immunogen	
Immunogen Region	C-Term
Specificity	
Immunogen Sequence	HEGYEKDLWEYIED



STJ70308 staining (0.5 µg/ml) of U937 lysate (RIPA buffer, 30 µg total protein per lane). Primary incubated for 1 hour. Detected by chemiluminescence.