

Anti-UBE2L3 antibody (C-Term) (STJ70299)

STJ70299

GENERAL INFORMATION

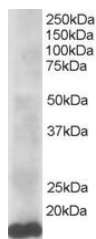
| | |
|--------------------------|--|
| Product Type | Primary antibodies |
| Short Description | Goat polyclonal antibody anti-UBE2L3 (C-Term) is suitable for use in ELISA and Immunohistochemistry research applications. |
| Applications | Pep-ELISA, IHC |
| Host/Source | Goat |
| Reactivity | Human, Mouse, Rat, Pig, Cow |

PRODUCT PROPERTIES

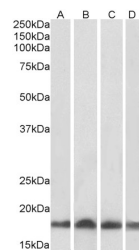
| | |
|----------------------------|--|
| Clonality | Polyclonal |
| Clone ID | |
| Concentration | 0.5 mg/mL |
| Conjugation | Unconjugated |
| Purification | Purified from goat serum by ammonium sulphate precipitation followed by antigen affinity chromatography using the immunizing peptide. |
| Dilution Range | IF-Strong expression of the protein seen in the cytoplasm. Dividing cells appear to show enhanced expression. 5µg/ml ELISA-antibody detection limit dilution 1:128000. |
| Formulation | 0.5 mg/ml in Tris saline, 0.02% sodium azide, pH7.3 with 0.5% bovine serum albumin. |
| Isotype | IgG |
| Storage Instruction | Store at -20 on receipt and minimise freeze-thaw cycles. |

TARGET INFORMATION

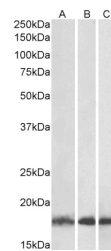
| | |
|---------------------------|---------------|
| Gene ID | 7332 |
| Gene Symbol | UBE2L3 |
| Uniprot ID | UB2L3_HUMAN |
| Immunogen | |
| Immunogen Region | C-Term |
| Specificity | |
| Immunogen Sequence | EFTKKYGEKRPVD |



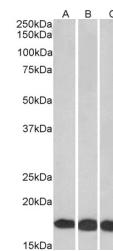
STJ70299 staining (0.5µg/ml) of HeLa lysate (RIPA buffer, 35µg total protein per lane). Primary incubated for 1 hour. Detected by western blot using chemiluminescence.



STJ70299 (0.01µg/ml) staining of Human (A), Mouse (B), Rat (C) and Pig (D) Heart lysate (35µg protein in RIPA buffer). Primary incubation was 1 hour. Detected by chemiluminescence.



STJ70299 (0.03µg/ml) staining of Human (A), Mouse (B) and Rat (C) Skeletal Muscle lysates (35µg protein in RIPA buffer). Primary incubation was 1 hour. Detected by chemiluminescence.



STJ70299 (0.01µg/ml) staining of HEK293 (A), HepG2 (B) and Jurkat (C) lysates (35µg protein in RIPA buffer). Primary incubation was 1 hour. Detected by chemiluminescence.

This product is suitable for in-vitro studies under the RESEARCH USE ONLY [RUO] licence. This product must not be used as for diagnostic or other medical purposes.
 St John's Laboratory Ltd, Knowledge Dock Business Centre, University Way, London, E16 2RD | Tel: 0208 223 3081