

Anti-CLLD8/SETDB2 antibody (N-Term) (STJ70279)

STJ70279

GENERAL INFORMATION

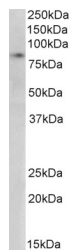
Product Type	Primary antibodies
Short Description	Goat polyclonal antibody anti-CLLD8/SETDB2 (N-Term) is suitable for use in ELISA, Western Blot and Immunohistochemistry research applications.
Applications	Pep-ELISA, WB, IHC
Host/Source	Goat
Reactivity	Human, Mouse, Rat, Dog, Pig, Cow

PRODUCT PROPERTIES

Clonality	Polyclonal
Clone ID	
Concentration	0.5 mg/mL
Conjugation	Unconjugated
Purification	Purified from goat serum by ammonium sulphate precipitation followed by antigen affinity chromatography using the immunizing peptide.
Dilution Range	WB-1-3ug/ml ELISA-antibody detection limit dilution 1:8000.
Formulation	0.5 mg/ml in Tris saline, 0.02% sodium azide, pH7.3 with 0.5% bovine serum albumin.
Isotype	IgG
Storage Instruction	Store at -20 on receipt and minimise freeze-thaw cycles.

TARGET INFORMATION

Gene ID	83852
Gene Symbol	SETDB2
Uniprot ID	SETB2_HUMAN
Immunogen	
Immunogen Region	N-Term
Specificity	This antibody is expected to recognize both reported isoforms (NP_114121.2; NP_001153780.1).
Immunogen Sequence	GEKNGDAKTFWME



STJ70279 (0.3ug/ml) staining of Nuclear HeLa lysate (35ug protein in RIPA buffer). Detected by chemiluminescence.