

Anti-FOXG1/BF2 antibody (C-Term) (STJ70240)

STJ70240

GENERAL INFORMATION

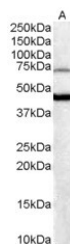
| | |
|--------------------------|---|
| Product Type | Primary antibodies |
| Short Description | Goat polyclonal antibody anti-FOXG1/BF2 (C-Term) is suitable for use in ELISA, Western Blot, Immunofluorescence and Immunohistochemistry research applications. |
| Applications | Pep-ELISA, WB, IF, IHC |
| Host/Source | Goat |
| Reactivity | Human, Mouse, Rat, Dog, Cow |

PRODUCT PROPERTIES

| | |
|----------------------------|---|
| Clonality | Polyclonal |
| Clone ID | |
| Concentration | 0.5 mg/mL |
| Conjugation | Unconjugated |
| Purification | Purified from goat serum by ammonium sulphate precipitation followed by antigen affinity chromatography using the immunizing peptide. |
| Dilution Range | WB-0.3-1.0µg/ml ELISA-antibody detection limit dilution 1:64000. |
| Formulation | 0.5 mg/ml in Tris saline, 0.02% sodium azide, pH7.3 with 0.5% bovine serum albumin. |
| Isotype | IgG |
| Storage Instruction | Store at -20 on receipt and minimise freeze-thaw cycles. |

TARGET INFORMATION

| | |
|---------------------------|--------------|
| Gene ID | 2290 |
| Gene Symbol | FOXG1 |
| Uniprot ID | FOXG1_HUMAN |
| Immunogen Region | C-Term |
| Specificity | |
| Immunogen Sequence | HQNQGSSNPLIH |



STJ70240 (0.3µg/ml) staining of Human Brain lysate (35µg protein in RIPA buffer). Detected by chemiluminescence.

This product is suitable for in-vitro studies under the RESEARCH USE ONLY [RUO] licence. This product must not be used as for diagnostic or other medical purposes.
 St John's Laboratory Ltd, Knowledge Dock Business Centre, University Way, London, E16 2RD | Tel: 0208 223 3081