

Anti-Claudin 14/CLDN14 antibody (C-Term) (STJ70212)

STJ70212

GENERAL INFORMATION

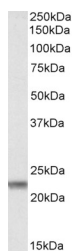
Product Type	Primary antibodies
Short Description	Goat polyclonal antibody anti-Claudin 14/CLDN14 (C-Term) is suitable for use in ELISA, Immunohistochemistry and Immunofluorescence research applications.
Applications	Pep-ELISA, IHC, IF
Host/Source	Goat
Reactivity	Human, Mouse, Rat, Dog, Pig, Cow

PRODUCT PROPERTIES

Clonality	Polyclonal
Clone ID	
Concentration	0.5 mg/mL
Conjugation	Unconjugated
Purification	Purified from goat serum by ammonium sulphate precipitation followed by antigen affinity chromatography using the immunizing peptide.
Dilution Range	WB-0.3-1µg/ml ELISA-antibody detection limit dilution 1:4000.
Formulation	0.5 mg/ml in Tris saline, 0.02% sodium azide, pH7.3 with 0.5% bovine serum albumin.
Isotype	IgG
Storage Instruction	Store at -20 on receipt and minimise freeze-thaw cycles.

TARGET INFORMATION

Gene ID	23562
Gene Symbol	CLDN14
Uniprot ID	CLD14_HUMAN
Immunogen	
Immunogen Region	C-Term
Specificity	Reported variants represent identical protein (NP_036262.1; NP_652763.1; NP_001139551.1; NP_001139550.1 and NP_001139549.1).
Immunogen Sequence	SATHSGYRLNDYV



STJ70212 (0.3µg/ml) staining of Human Liver lysate (35µg protein in RIPA buffer). Primary incubation was 1 hour. Detected by chemiluminescence.

This product is suitable for in-vitro studies under the RESEARCH USE ONLY [RUO] licence. This product must not be used as for diagnostic or other medical purposes.
St John's Laboratory Ltd, Knowledge Dock Business Centre, University Way, London, E16 2RD | Tel: 0208 223 3081