

Anti-ARPC2 antibody (C-Term) (STJ70177)

STJ70177

GENERAL INFORMATION

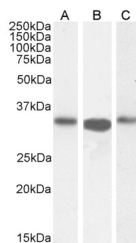
Product Type	Primary antibodies
Short Description	Goat polyclonal antibody anti-ARPC2 (C-Term) is suitable for use in ELISA and Western Blot research applications.
Applications	Pep-ELISA, WB
Host/Source	Goat
Reactivity	Human, Mouse, Rat, Dog, Cow

PRODUCT PROPERTIES

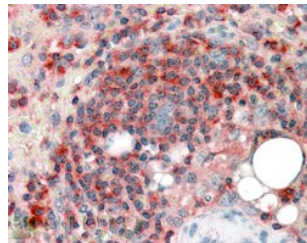
Clonality	Polyclonal
Clone ID	
Concentration	0.5 mg/mL
Conjugation	Unconjugated
Purification	Purified from goat serum by ammonium sulphate precipitation followed by antigen affinity chromatography using the immunizing peptide.
Dilution Range	WB-0.1-0.5µg/ml IHC-Recommended concentration, 3-5µg/ml IF-Strong expression of the protein seen in the cytoplasm of A431 and HeLa cells. 10µg/ml ELISA-antibody detection limit dilution 1:32000.
Formulation	0.5 mg/ml in Tris saline, 0.02% sodium azide, pH7.3 with 0.5% bovine serum albumin.
Isotype	IgG
Storage Instruction	Store at -20 on receipt and minimise freeze-thaw cycles.

TARGET INFORMATION

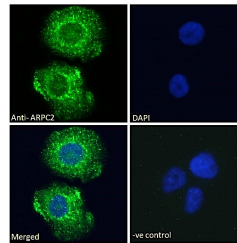
Gene ID	10109
Gene Symbol	ARPC2
Uniprot ID	ARPC2_HUMAN
Immunogen	
Immunogen Region	C-Term
Specificity	The reported variants NP_005722.1 and NP_690601.1 represent identical protein.
Immunogen Sequence	EMKTTTGKTFSSR



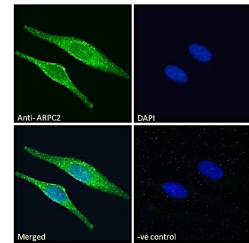
STJ70177 (0.5 µg/ml) staining of CACO-2 (A) (0.1 µg/ml) HeLa (B) and Jurkat (C) lysate (35 µg protein in RIPA buffer). Detected by chemiluminescence.



STJ70177 (3.8 µg/ml) staining of paraffin embedded Human Spleen. Steamed antigen retrieval with citrate buffer pH 6, AP-staining.



STJ70177 Immunofluorescence analysis of paraformaldehyde fixed A431 cells, permeabilized with 0.15% Triton. Primary incubation 1hr (10 µg/ml) followed by Alexa Fluor 488 secondary antibody (2 µg/ml) showing cytoplasmic staining. The nuclear stain is DAPI (blue). NA NA Negative control: Unimmunized goat IgG (10 µg/ml) followed by Alexa Fluor 488 secondary antibody (2 µg/ml).



STJ70177 Immunofluorescence analysis of paraformaldehyde fixed HeLa cells, permeabilized with 0.15% Triton. Primary incubation 1hr (10 µg/ml) followed by Alexa Fluor 488 secondary antibody (2 µg/ml) showing cytoplasmic staining. The nuclear stain is DAPI (blue). NA NA Negative control: Unimmunized goat IgG (10 µg/ml) followed by Alexa Fluor 488 secondary antibody (2 µg/ml).

This product is suitable for in-vitro studies under the RESEARCH USE ONLY [RUO] licence. This product must not be used as for diagnostic or other medical purposes.

St John's Laboratory Ltd, Knowledge Dock Business Centre, University Way, London, E16 2RD | Tel: 0208 223 3081