

Anti-PEBP1 antibody (C-Term) (STJ70158)

STJ70158

GENERAL INFORMATION

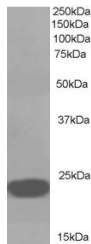
Product Type	Primary antibodies
Short Description	Goat polyclonal antibody anti-PEBP1 (C-Term) is suitable for use in ELISA and Immunohistochemistry research applications.
Applications	Pep-ELISA, IHC
Host/Source	Goat
Reactivity	Human, Mouse, Rat, Dog, Cow

PRODUCT PROPERTIES

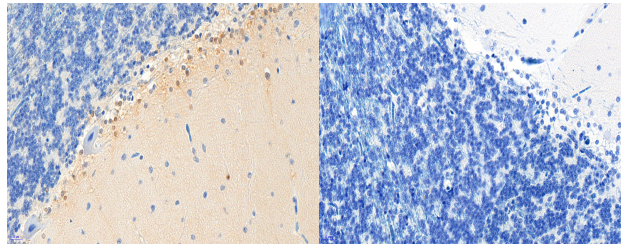
Clonality	Polyclonal
Clone ID	
Concentration	0.5 mg/mL
Conjugation	Unconjugated
Purification	Purified from goat serum by ammonium sulphate precipitation followed by antigen affinity chromatography using the immunizing peptide.
Dilution Range	WB-Recommended for use at 0.5-2µg/ml IHC-5µg/ml ELISA-antibody detection limit dilution 1:32000.
Formulation	0.5 mg/ml in Tris saline, 0.02% sodium azide, pH7.3 with 0.5% bovine serum albumin.
Isotype	IgG
Storage Instruction	Store at -20 on receipt and minimise freeze-thaw cycles.

TARGET INFORMATION

Gene ID	5037
Gene Symbol	PEBP1
Uniprot ID	PEBP1_HUMAN
Immunogen	
Immunogen Region	C-Term
Specificity	
Immunogen Sequence	DYVPKLYEQLSGK



STJ70158 (1µg/ml) staining of A549 lysate (35µg protein in RIPA buffer). Detected by chemiluminescence.



STJ70158 (5µg/ml) staining of paraffin embedded Human Cortex. Heat induced antigen retrieval with citrate buffer pH 6, HRP-staining.

STJ70158 Negative Control showing staining of paraffin embedded Human Cortex, with no primary antibody.

This product is suitable for in-vitro studies under the RESEARCH USE ONLY [RUO] licence. This product must not be used as for diagnostic or other medical purposes.
St John's Laboratory Ltd, Knowledge Dock Business Centre, University Way, London, E16 2RD | Tel: 0208 223 3081