

Anti-MARK4L antibody (C-Term) (STJ70150)

STJ70150

GENERAL INFORMATION

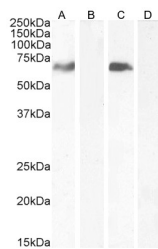
| | |
|--------------------------|--|
| Product Type | Primary antibodies |
| Short Description | Goat polyclonal antibody anti-MARK4L (C-Term) is suitable for use in ELISA, Immunofluorescence and Flow Cytometry research applications. |
| Applications | Pep-ELISA, IF, FC |
| Host/Source | Goat |
| Reactivity | Human, Mouse |

PRODUCT PROPERTIES

| | |
|----------------------------|---|
| Clonality | Polyclonal |
| Clone ID | |
| Concentration | 0.5 mg/mL |
| Conjugation | Unconjugated |
| Purification | Purified from goat serum by ammonium sulphate precipitation followed by antigen affinity chromatography using the immunizing peptide. |
| Dilution Range | WB-0.3-1µg/ml FC-Flow cytometric analysis of A431 cells. 10µg/ml ELISA-antibody detection limit dilution 1:128000. |
| Formulation | 0.5 mg/ml in Tris saline, 0.02% sodium azide, pH7.3 with 0.5% bovine serum albumin. |
| Isotype | IgG |
| Storage Instruction | Store at -20 on receipt and minimise freeze-thaw cycles. |

TARGET INFORMATION

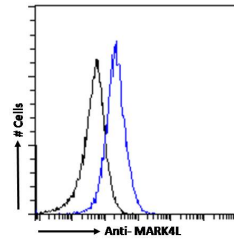
| | |
|---------------------------|--|
| Gene ID | 57787 |
| Gene Symbol | MARK4 |
| Uniprot ID | MARK4_HUMAN |
| Immunogen | |
| Immunogen Region | C-Term |
| Specificity | This antibody is expected to recognize the reported long isoform 1 (NP_113605.2) only. |
| Immunogen Sequence | IKRKPPPGCSDSPGV |



STJ70150 (0.3µg/ml) staining of Human Cerebellum lysate (A) + peptide (B). Mouse Brain lysate (C) + peptide (D). (35µg protein in RIPA buffer). Detected by chemiluminescence.



STJ70150 (1µg/ml) staining of U251 cell lysate (35µg protein in RIPA buffer). Detected by chemiluminescence.



STJ70150 Flow cytometric analysis of paraformaldehyde fixed A431 cells (blue line), permeabilized with 0.5% Triton. Primary incubation 1hr (10µg/ml) followed by Alexa Fluor 488 secondary antibody (1µg/ml). IgG control: Unimmunized goat IgG (black line) followed by Alexa Fluor 488 secondary antibody.