

Anti-TERF1/PIN2 antibody (C-Term) (STJ70127)

STJ70127

GENERAL INFORMATION

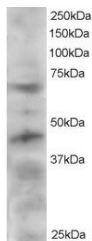
| | |
|--------------------------|--|
| Product Type | Primary antibodies |
| Short Description | Goat polyclonal antibody anti-TERF1/PIN2 (C-Term) is suitable for use in ELISA, Western Blot and Immunohistochemistry research applications. |
| Applications | Pep-ELISA, WB, IHC |
| Host/Source | Goat |
| Reactivity | Human, Pig, Cow |

PRODUCT PROPERTIES

| | |
|----------------------------|---|
| Clonality | Polyclonal |
| Clone ID | |
| Concentration | 0.5 mg/mL |
| Conjugation | Unconjugated |
| Purification | Purified from goat serum by ammonium sulphate precipitation followed by antigen affinity chromatography using the immunizing peptide. |
| Dilution Range | WB-Recommended for use at 1-3µg/ml ELISA-antibody detection limit dilution 1:8000. |
| Formulation | 0.5 mg/ml in Tris saline, 0.02% sodium azide, pH7.3 with 0.5% bovine serum albumin. |
| Isotype | IgG |
| Storage Instruction | Store at -20 on receipt and minimise freeze-thaw cycles. |

TARGET INFORMATION

| | |
|---------------------------|---|
| Gene ID | 7013 |
| Gene Symbol | TERF1 |
| Uniprot ID | TERF1_HUMAN |
| Immunogen | |
| Immunogen Region | C-Term |
| Specificity | This antibody is expected to recognise isoform 1 (NP_059523.2) and isoform 2 (NP_003209.2). |
| Immunogen Sequence | TMKCLKLISSDSED |



STJ70127 staining (2µg/ml) of HeLa lysate (RIPA buffer, 30µg total protein per lane). Primary incubated for 12 hour. Detected by western blot using chemiluminescence.