

Anti-CRKL antibody (C-Term) (STJ70094)

STJ70094

GENERAL INFORMATION

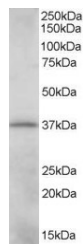
Product Type	Primary antibodies
Short Description	Goat polyclonal antibody anti-CRKL (C-Term) is suitable for use in ELISA, Western Blot, Immunohistochemistry, Immunofluorescence and ChIP research applications.
Applications	Pep-ELISA, WB, IHC, IF, ChIP
Host/Source	Goat
Reactivity	Human, Mouse, Rat

PRODUCT PROPERTIES

Clonality	Polyclonal
Clone ID	
Concentration	0.5 mg/mL
Conjugation	Unconjugated
Purification	Purified from goat serum by ammonium sulphate precipitation followed by antigen affinity chromatography using the immunizing peptide.
Dilution Range	WB-0.01-0.03µg/ml IHC-2.5-3.8µg/ml ELISA-antibody detection limit dilution 1:16000.
Formulation	0.5 mg/ml in Tris saline, 0.02% sodium azide, pH7.3 with 0.5% bovine serum albumin.
Isotype	IgG
Storage Instruction	Store at -20 on receipt and minimise freeze-thaw cycles.

TARGET INFORMATION

Gene ID	1399
Gene Symbol	CRKL
Uniprot ID	CRKL_HUMAN
Immunogen	C-Term
Region	
Specificity	
Immunogen Sequence	KIFDPQNPDENE



STJ70094 (0.01µg/ml) staining of K562 lysate (35µg protein in RIPA buffer). Detected by chemiluminescence.