

Anti-WHIP/WRNIP1 antibody (C-Term) (STJ70051)

STJ70051

GENERAL INFORMATION

Product Type	Primary antibodies
Short Description	Goat polyclonal antibody anti-WHIP/WRNIP1 (C-Term) is suitable for use in ELISA, Western Blot and Immunofluorescence research applications.
Applications	Pep-ELISA, WB, IF
Host/Source	Goat
Reactivity	Human, Mouse, Rat, Dog, Cow

PRODUCT PROPERTIES

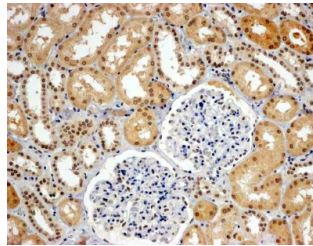
Clonality	Polyclonal
Clone ID	
Concentration	0.5 mg/mL
Conjugation	Unconjugated
Purification	Purified from goat serum by ammonium sulphate precipitation followed by antigen affinity chromatography using the immunizing peptide.
Dilution Range	IHC-Recommended concentration, 4-6µg/ml ELISA-antibody detection limit dilution 1:32000.
Formulation	0.5 mg/ml in Tris saline, 0.02% sodium azide, pH7.3 with 0.5% bovine serum albumin.
Isotype	IgG
Storage Instruction	Store at -20 on receipt and minimise freeze-thaw cycles.

TARGET INFORMATION

Gene ID	56897
Gene Symbol	WRNIP1
Uniprot ID	WRIP1_HUMAN
Immunogen	
Immunogen Region	C-Term
Specificity	This antibody is expected to recognise isoform 1 (NP_064520.2) and isoform 2 (NP_569079.1).
Immunogen Sequence	EELRGVDFFKQRR



STJ70051 (1µg/ml) staining of Jurkat lysate (35µg protein in RIPA buffer). Primary incubation was 1 hour. Detected by chemiluminescence.



STJ70051 (4µg/ml) staining of paraffin embedded Human Kidney. Steamed antigen retrieval with Tris/EDTA buffer pH 9, HRP-staining.

This product is suitable for in-vitro studies under the RESEARCH USE ONLY [RUO] licence. This product must not be used as for diagnostic or other medical purposes.
St John's Laboratory Ltd, Knowledge Dock Business Centre, University Way, London, E16 2RD | Tel: 0208 223 3081