

Anti-SHP2/PTPN11 antibody (C-Term) (STJ70042)

STJ70042

GENERAL INFORMATION

Product Type	Primary antibodies
Short Description	Goat polyclonal antibody anti-SHP2/PTPN11 (C-Term) is suitable for use in ELISA, Immunofluorescence and Flow Cytometry research applications.
Applications	Pep-ELISA, IF, FC
Host/Source	Goat
Reactivity	Human, Mouse, Rat, Pig, Cow

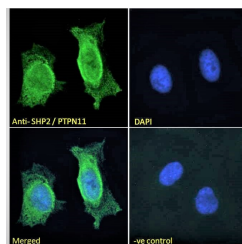
PRODUCT PROPERTIES

Clonality	Polyclonal
Clone ID	
Concentration	0.5 mg/mL
Conjugation	Unconjugated
Purification	Purified from goat serum by ammonium sulphate precipitation followed by antigen affinity chromatography using the immunizing peptide.
Dilution Range	WB-1-3µg/ml IF-Strong expression of the protein seen in the nuclei and cytoplasm of HeLa cells. 10µg/ml ELISA-antibody detection limit dilution 1:128000.
Formulation	0.5 mg/ml in Tris saline, 0.02% sodium azide, pH7.3 with 0.5% bovine serum albumin.
Isotype	IgG
Storage Instruction	Store at -20 on receipt and minimise freeze-thaw cycles.

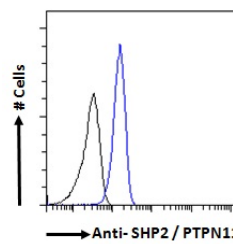
TARGET INFORMATION

Gene ID	5781
Gene Symbol	PTPN11
Uniprot ID	PTN11_HUMAN
Immunogen	C-Term
Region	
Specificity	
Immunogen Sequence	YENVGLMQQKSFR

250kDa
150kDa
100kDa
75kDa
50kDa
37kDa
25kDa
20kDa
15kDa
10kDa



STJ70042 Immunofluorescence analysis of paraformaldehyde fixed HeLa cells, permeabilized with 0.15% Triton. Primary incubation 1hr (10µg/ml) followed by Alexa Fluor 488 secondary antibody (2µg/ml), showing nuclear and cytoplasmic staining. The nuclear stain is DAPI (blue). Negative control: Unimmunized goat IgG (10µg/ml) followed by Alexa Fluor 488 secondary antibody (2µg/ml).



STJ70042 Flow cytometric analysis of paraformaldehyde fixed A431 cells (blue line), permeabilized with 0.5% Triton. Primary incubation 1hr (10µg/ml) followed by Alexa Fluor 488 secondary antibody (1µg/ml). IgG control: Unimmunized goat IgG (black line) followed by Alexa Fluor 488 secondary antibody.

STJ70042 staining (2µg/ml) of Human Muscle lysate (RIPA buffer, 50µg total protein per lane). Detected by chemiluminescence.