

Anti-ALDH1A1 antibody (C-Term) (STJ70020)

STJ70020

GENERAL INFORMATION

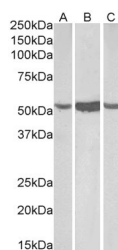
Product Type	Primary antibodies
Short Description	Goat polyclonal antibody anti-ALDH1A1 (C-Term) is suitable for use in ELISA and Western Blot research applications.
Applications	Pep-ELISA, WB
Host/Source	Goat
Reactivity	Human, Mouse, Rat

PRODUCT PROPERTIES

Clonality	Polyclonal
Clone ID	
Concentration	0.5 mg/mL
Conjugation	Unconjugated
Purification	Purified from goat serum by ammonium sulphate precipitation followed by antigen affinity chromatography using the immunizing peptide.
Dilution Range	WB-0.1-0.3µg/ml ELISA-antibody detection limit dilution 1:1000.
Formulation	0.5 mg/ml in Tris saline, 0.02% sodium azide, pH7.3 with 0.5% bovine serum albumin.
Isotype	IgG
Storage	Store at -20 on receipt and minimise freeze-thaw cycles.
Instruction	

TARGET INFORMATION

Gene ID	216
Gene Symbol	ALDH1A1
Uniprot ID	AL1A1_HUMAN
Immunogen	
Immunogen Region	C-Term
Specificity	This antibody may cross-react with ALDH1A2 (GenelD 8854) with one residue difference from this design and with ALDH2 (GenelD 217) with two residues difference from this design.
Immunogen Sequence	EVKTVTVKISQKNS



STJ70020 (0.1µg/ml) staining of Human (A), Mouse (B) and Rat (C) Liver lysate (55µg protein in RIPA buffer). Detected by chemiluminescence.

This product is suitable for in-vitro studies under the RESEARCH USE ONLY [RUO] licence. This product must not be used as for diagnostic or other medical purposes.
St John's Laboratory Ltd, Knowledge Dock Business Centre, University Way, London, E16 2RD | Tel: 0208 223 3081