

Anti-ZCCHC11/PAPD3 antibody (C-Term) (STJ70016)

STJ70016

GENERAL INFORMATION

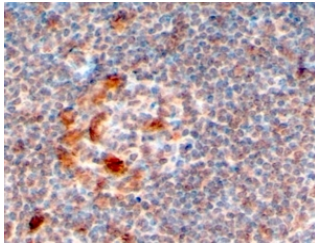
| | |
|--------------------------|---|
| Product Type | Primary antibodies |
| Short Description | Goat polyclonal antibody anti-ZCCHC11/PAPD3 (C-Term) is suitable for use in ELISA and Immunohistochemistry research applications. |
| Applications | Pep-ELISA, IHC |
| Host/Source | Goat |
| Reactivity | Human, Mouse, Rat, Dog, Cow |

PRODUCT PROPERTIES

| | |
|----------------------------|---|
| Clonality | Polyclonal |
| Clone ID | |
| Concentration | 0.5 mg/mL |
| Conjugation | Unconjugated |
| Purification | Purified from goat serum by ammonium sulphate precipitation followed by antigen affinity chromatography using the immunizing peptide. |
| Dilution Range | IHC-2-6µg/ml ELISA-antibody detection limit dilution 1:16000. |
| Formulation | 0.5 mg/ml in Tris saline, 0.02% sodium azide, pH7.3 with 0.5% bovine serum albumin. |
| Isotype | IgG |
| Storage Instruction | Store at -20 on receipt and minimise freeze-thaw cycles. |

TARGET INFORMATION

| | |
|---------------------------|--|
| Gene ID | 23318 |
| Gene Symbol | TUT4 |
| Uniprot ID | TUT4_HUMAN |
| Immunogen | |
| Immunogen Region | C-Term |
| Specificity | This antibody is expected to recognize all 3 reported isoforms (as represented by NP_001009881.1; NP_056084.1; NP_001009882.1) |
| Immunogen Sequence | RERCPHPPRGNVSE |



STJ70016 (4µg/ml) staining of paraffin embedded Human Lymph Node. Steamed antigen retrieval with citrate buffer pH 6, HRP-staining.

This product is suitable for in-vitro studies under the RESEARCH USE ONLY [RUO] licence. This product must not be used as for diagnostic or other medical purposes.
St John's Laboratory Ltd, Knowledge Dock Business Centre, University Way, London, E16 2RD | Tel: 0208 223 3081