

Anti-BCL7A antibody (C-Term) (STJ70006)

STJ70006

GENERAL INFORMATION

Product Type	Primary antibodies
Short Description	Goat polyclonal antibody anti-BCL7A (C-Term) is suitable for use in ELISA, Western Blot, Immunofluorescence and Flow Cytometry research applications.
Applications	Pep-ELISA, WB, IF, FC
Host/Source	Goat
Reactivity	Human, Mouse, Rat, Dog, Cow, Pig

PRODUCT PROPERTIES

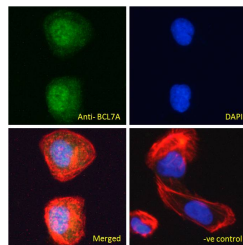
Clonality	Polyclonal
Clone ID	
Concentration	0.5 mg/mL
Conjugation	Unconjugated
Purification	Purified from goat serum by ammonium sulphate precipitation followed by antigen affinity chromatography using the immunizing peptide.
Dilution Range	WB-1-3µg/ml IF-Strong expression of the protein seen in the nuclei of U2OS cells. 10µg/ml FC-Flow cytometric analysis of Daudi cells. 10ug/ml ELISA-antibody detection limit dilution 1:4000.
Formulation	0.5 mg/ml in Tris saline, 0.02% sodium azide, pH7.3 with 0.5% bovine serum albumin.
Isotype	IgG
Storage	Store at -20 on receipt and minimise freeze-thaw cycles.
Instruction	

TARGET INFORMATION

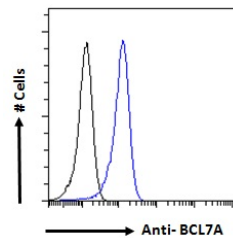
Gene ID	605
Gene Symbol	BCL7A
Uniprot ID	BCL7A_HUMAN
Immunogen	
Immunogen Region	C-Term
Specificity	This antibody is expected to recognize both reported isoforms (NP_066273.1; NP_001019979.1).
Immunogen Sequence	MKLEASQQNSEEM



STJ70006 staining (1µg/ml) of Human Lymph Node lysate (35µg protein in RIPA buffer). Detected by chemiluminescence.



STJ70006 Immunofluorescence analysis of paraformaldehyde fixed U2OS cells, permeabilized with 0.15% Triton. Primary incubation 1hr (10µg/ml) followed by Alexa Fluor 488 secondary antibody (2µg/ml), showing nuclear staining. Actin filaments were stained with phalloidin (red) and the nuclear stain is DAPI (blue). Negative control: Unimmunized goat IgG (10µg/ml) followed by Alexa Fluor 488 secondary antibody (2µg/ml).



STJ70006 Flow cytometric analysis of paraformaldehyde fixed Daudi cells (blue line), permeabilized with 0.5% Triton. Primary incubation 1hr (10µg/ml) followed by Alexa Fluor 488 secondary antibody (1µg/ml). IgG control: Unimmunized goat IgG (black line) followed by Alexa Fluor 488 secondary antibody.

This product is suitable for in-vitro studies under the RESEARCH USE ONLY [RUO] licence. This product must not be used as for diagnostic or other medical purposes.
St John's Laboratory Ltd, Knowledge Dock Business Centre, University Way, London, E16 2RD | Tel: 0208 223 3081