

Anti-ZMPSTE24 antibody (450-480) (STJ503598)

STJ503598

GENERAL INFORMATION

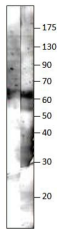
Product Type	Primary antibodies
Short Description	Rabbit polyclonal antibody anti-ZMPSTE24 (450-480) is suitable for use in ELISA, Immunoprecipitation and Western Blot research applications.
Applications	ELISA, IP, WB
Host/Source	Rabbit
Reactivity	Human, Mouse, Rat

PRODUCT PROPERTIES

Clonality	Polyclonal
Clone ID	
Concentration	0.55 µg/µl
Conjugation	Unconjugated
Purification	Affinity Purified
Dilution Range	WB: 1:500 DB: 1:10, 000 ELISA: 1:10, 000 IP: 1:200
Formulation	
Isotype	IgG
Storage Instruction	Store at -20°C for long term storage. Avoid freeze-thaw cycles.

TARGET INFORMATION

Gene ID	10269
Gene Symbol	ZMPSTE24
Uniprot ID	FACE1_HUMAN
Immunogen	Synthetic peptide taken within amino acid region 450-480 on mouse ZMPSTE24 protein.
Immunogen Region	450-480
Specificity	
Immunogen Sequence	



Western blot with Anti-ZMPSTE24 Antibody (STJ503598) with 1) SKNBE cells, 2) ZMPSTE24 peptide. Antibody at 1:500 dilution in buffer.